



Madison, Wisconsin

INDEX OF SHEETS

SHEET NO. D1	TYPICAL SECTIONS
SHEET NO. EC1	EROSION CONTROL PLAN
SHEET NO. P1	STREET PLAN & PROFILES
SHEET NO. GI-1	RAIN GARDEN PLANS
SHEET NO. U1-U4	UTILITY PLAN & PROFILES
SHEET NO. U5	SANITARY SEWER SCHEDULE
SHEET NO. U6-U7	STORM SEWER SCHEDULES
SHEET NO. W1-W2	WATER PLAN & PROFILES
SHEET NO. W3	WATER IMPACT PLAN
SHEET NO. W4	WATER ESTIMATE OF MATERIALS
SHEET NO. M1-M2	PAVEMENT MARKING PLAN
SHEET NO. X1-X2	CROSS SECTIONS

CONVENTIONAL SIGNS	
FIELD VERIFY ALL UTILITY LOCATIONS	
GAS	— G —
STORM SEWER	— ST —
SANITARY SEWER	— SN —
WATER	— W —
BURIED ELECTRIC	— E —
OVERHEAD ELECTRIC	— OH —
POWER POLE	□
ADA COMPLIANT RAMP W/ DETECTABLE WARNING FIELD	■
COMBUSTIBLE FLUIDS	★

NOTES:

- ALL GUTTERS SHALL DRAIN WITH A MINIMUM GRADE OF 0.50% TOWARD STORM SEWER INLETS.
- SIDEWALK RAMPS SHALL HAVE A MAXIMUM SLOPE OF 1" PER 12". SIDEWALK AND CURB RAMPS SHALL BE CONSTRUCTED WITH A SIDE SLOPE OF 2.00%. SIDEWALK SHALL HAVE A MINIMUM LONGITUDINAL SLOPE OF 0.50% AND A MAXIMUM LONGITUDINAL SLOPE OF 5.00% EXCEPT WHERE STREET GRADES EXCEED 5.00%.

CITY MAINTENANCE PLAN NOT REQUIRED

CITY OF MADISON

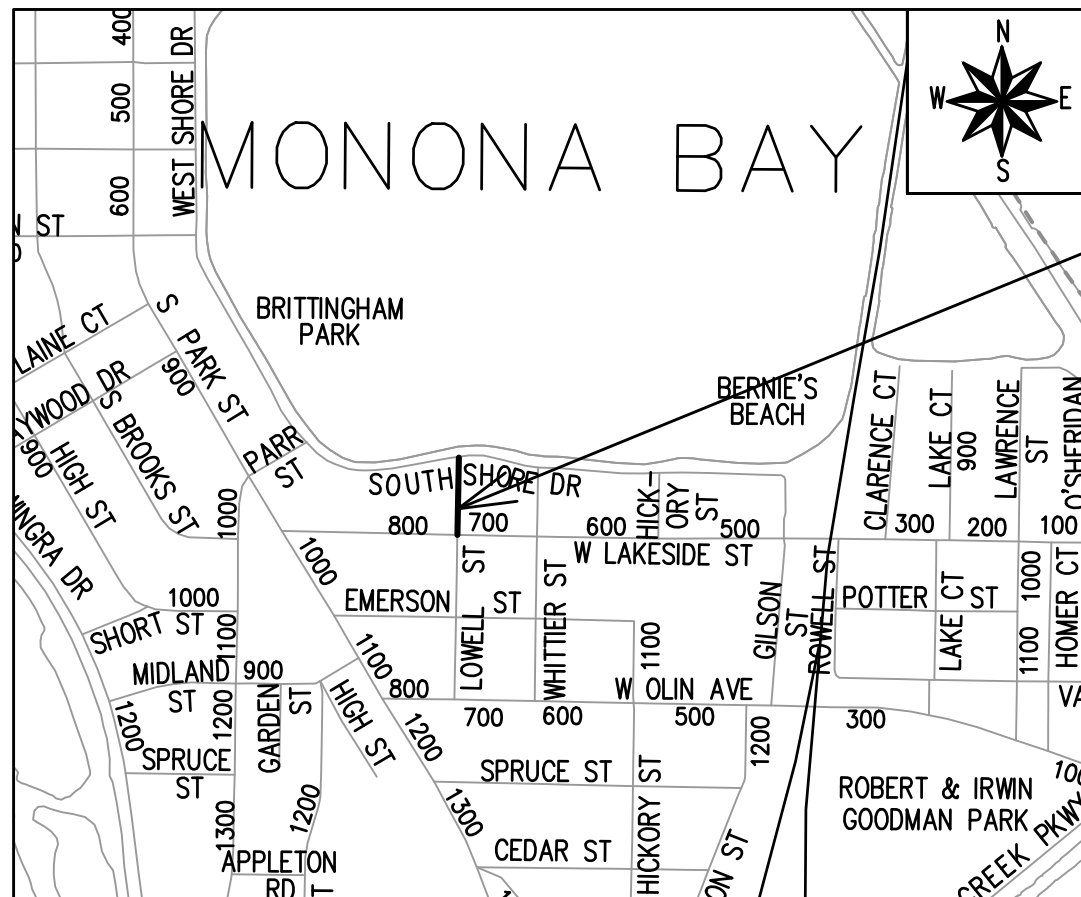
CITY ENGINEERING DIVISION

DEPARTMENT OF PUBLIC WORKS

PLAN OF PROPOSED IMPROVEMENT

LOWELL STREET ASSESSMENT DISTRICT - 2024

CITY PROJECT NO. 14078
CONTRACT NO. 8712



PROJECT LOCATION

EARTH WORK SUMMARY:

EXCAVATION CUT (MEASURED PLAN QUANTITY)	= 600 C.Y.
ESTIMATED UNDISTRIBUTED UNDERCUT	= 100 C.Y.
TOTAL UNCLASSIFIED EXCAVATION CUT	= 700 C.Y.

PUBLIC IMPROVEMENT PROJECT APPROVED

JANUARY 23, 2024

BY THE COMMON COUNCIL OF MADISON, WISCONSIN

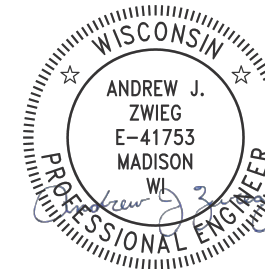
PUBLIC IMPROVEMENT DESIGN APPROVED BY:

Mar 5, 2024

City Engineer

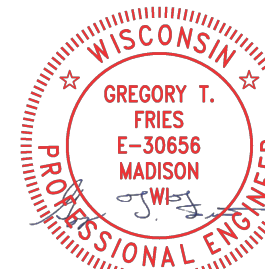
Date

STREET DESIGNED BY:



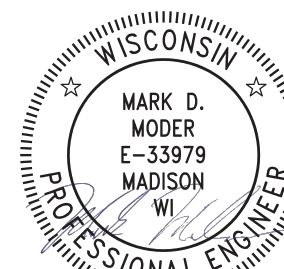
Mar 5, 2024

STORM SEWER DESIGNED BY:



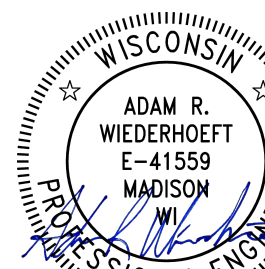
Mar 5, 2024

SANITARY SEWER DESIGNED BY:



Mar 6, 2024

WATER DESIGNED BY:



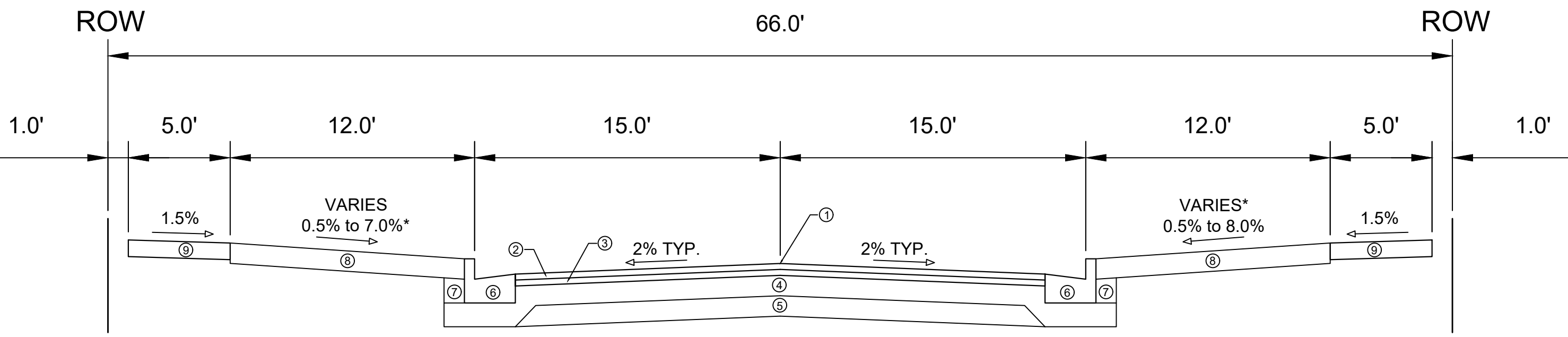
Mar 5, 2024

PLOT SCALE: 1 IN.=1 FT., XREF

PLOT NAME: ---

REV. DATE: 2/19/2024 3:49 PM

ORIGINATOR: CITY_OF_MADISON



**TYPICAL SECTION
LOWELL STREET
STA 10+68.91 TO STA 14+01.50**

SPECIAL NOTES:

-TYPICAL SECTION NOT TO SCALE
*SEE X SHEETS FOR CROSS SLOPES

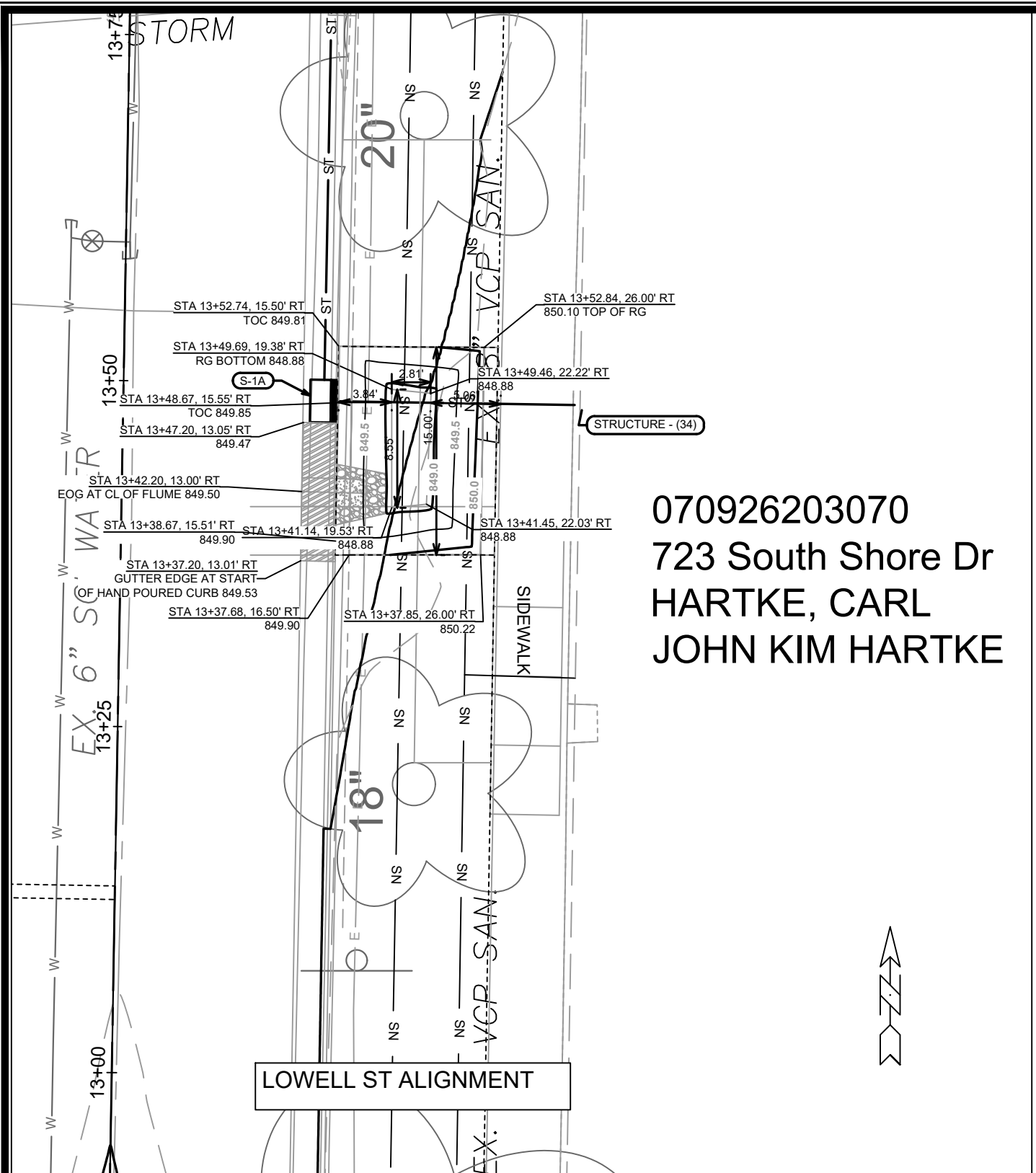
- ① POINT REFERRED TO ON PROFILE
- ② 1.75" H.M.A. PAVEMENT- TYPE 4 LT 58-28 S
- ③ 1.75" H.M.A. PAVEMENT- TYPE 4 LT 58-28 S
- ④ 6" CRUSHED AGGREGATE BASE COURSE GRADATION 2
- ⑤ 6" CRUSHED AGGREGATE BASE COURSE GRADATION 1
- ⑥ CONCRETE CURB AND GUTTER TYPE 'A'.
- ⑦ FILL INCIDENTAL TO CURB AND GUTTER INSTALLATION
- ⑧ RESTORE DISTURBED AREAS WITH 6" TOPSOIL, SEED AND MATTING
- ⑨ 5" CONCRETE SIDEWALK, REMOVE AND REPLACE AS SHOWN ON THE P-SHEETS OR AS DIRECTED BY THE ENGINEER

MARK	REVISION	DATE	BY
14078		3/15/2024	
Designed By: #	14078	Scale:	D-1

14078
MADISON, WI
CONTRACT NO: 8712
TYPICAL SECTIONS
LOWELL ST RECONSTRUCTION
M:\DESIGN\Projects\14078\CAD\Streets\14078EN-Details.dwg

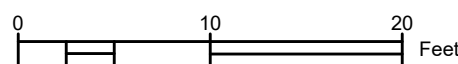
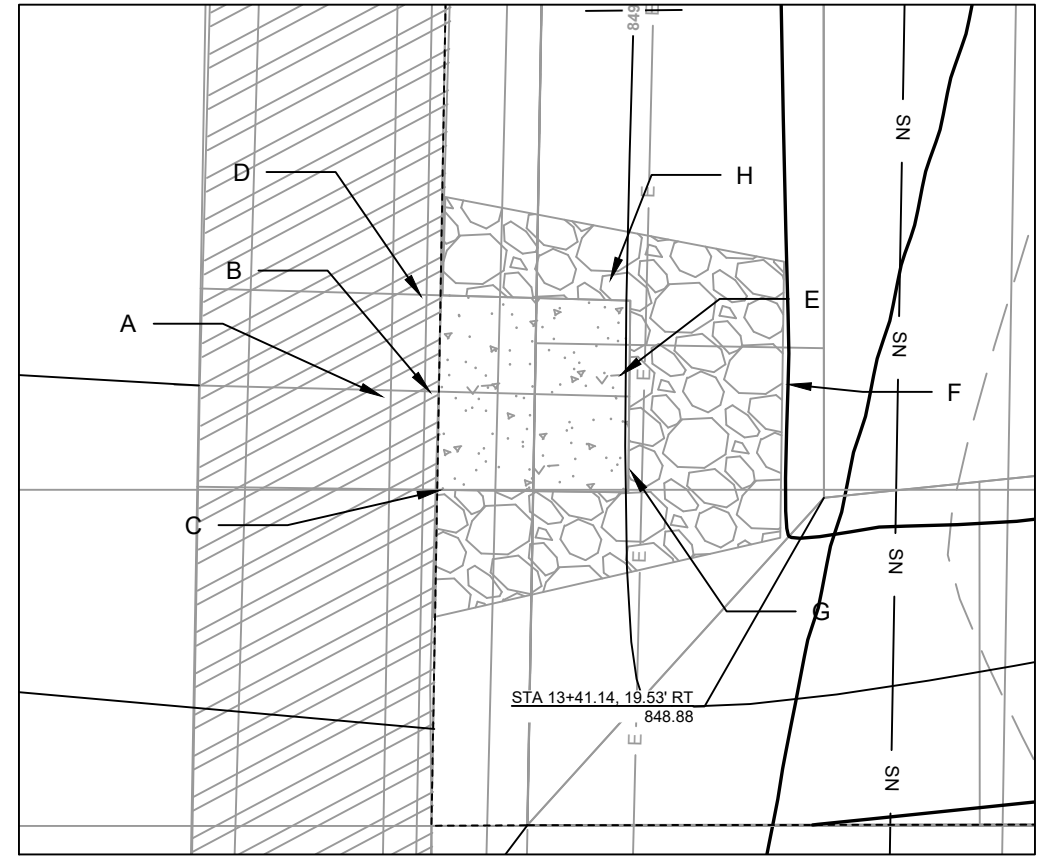


14078
D-1

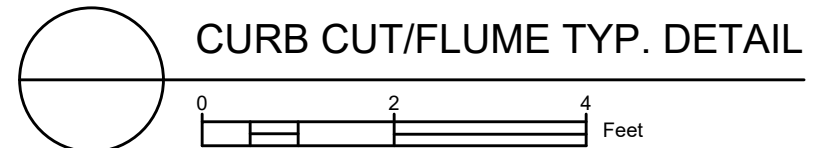


070926203070
 723 South Shore Dr
 HARTKE, CARL
 JOHN KIM HARTKE

DETAIL POINT ELEVATIONS/DESCRIPTIONS			
Point	Point Description	Distance from Existing FlowLine (ft)	Elevation
		Pond depth (inches)	6
		Distance from Existing FlowLine (ft)	Elevation
	Ex. EOG at CL of Flume	+0.125	849.50
A	Ex. Flow Line at CL of Flume	0	849.38
B	Pro. Gutter Flow Line at CL of Flume	-0.17	849.21
C	Edge of Flume @ Gutter (Uphill)	varies	849.39
D	Edge of Flume @ Gutter (Downhill)	varies	849.36
E	Bottom of Flume at CL	varies	849.04
F	Bottom of Stone/Pond	varies	848.88
G	Edge of Flume @ Bottom of Basin (Uphill)	varies	849.31
H	Edge of Flume @ Bottom of Basin (Downhill)	varies	849.28



NOTES:
 1. ALL AREAS WITHIN GRADING LIMITS TO RECEIVE CLASS I, TYPE A - ORGANIC EROSION CONTROL MATTING IF COMPLETED OUTSIDE OF GROWING SEASONS, SEE SPECIAL PROVISIONS
 2. ALL AREAS OUTSIDE OF TOP OF BASIN SHALL RECEIVE TERRACE SEED MIX, DO NOT SEED WITHIN SIDE SLOPES OR BOTTOM OF BASIN.
 3. SEE DETAIL D-1 AND D-2.



MARK	REVISION	DATE	BY

14078
 MADISON, WI
 8622
 CONTRACT NO:

14078SWR-GI - 723 SOUTH SHORE
 LOWELL ST RECONSTRUCTION
 M:\DESIGN\Projects\14078\CAD\sewers\14078SWR-GI.dwg

14078
 GI-1

070926207056
805 W Lakeside St
THOMAS JR, MARK R
KATHLEEN L SEIDEN-THOMAS

070926202337
806 W Lakeside St
DAVIS, JAMES K &
ERICKA L DAVIS

070926202030
805 South Shore Dr
SPAENI, GARY A &
SHARON E FALLON

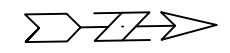
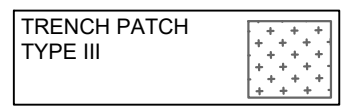
070926207048
801 W Lakeside St
STEVENS, ANDREW & ANNA

070926202345
802 W Lakeside St
HOPPE, JAMIE W & JANE P

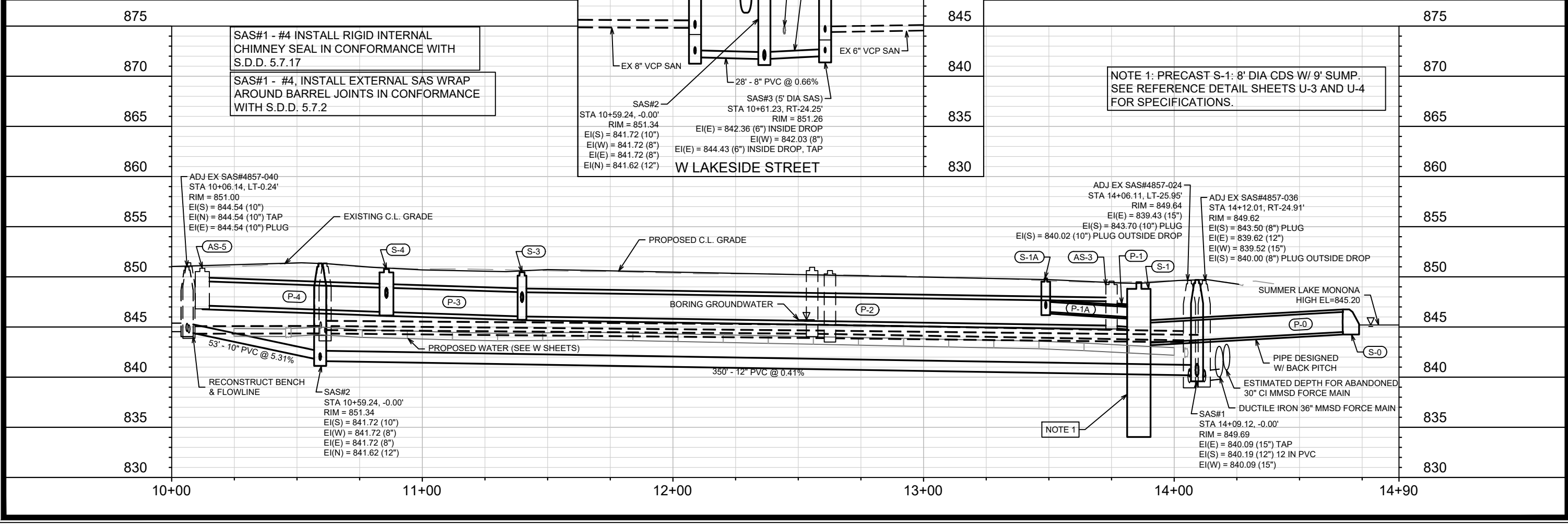
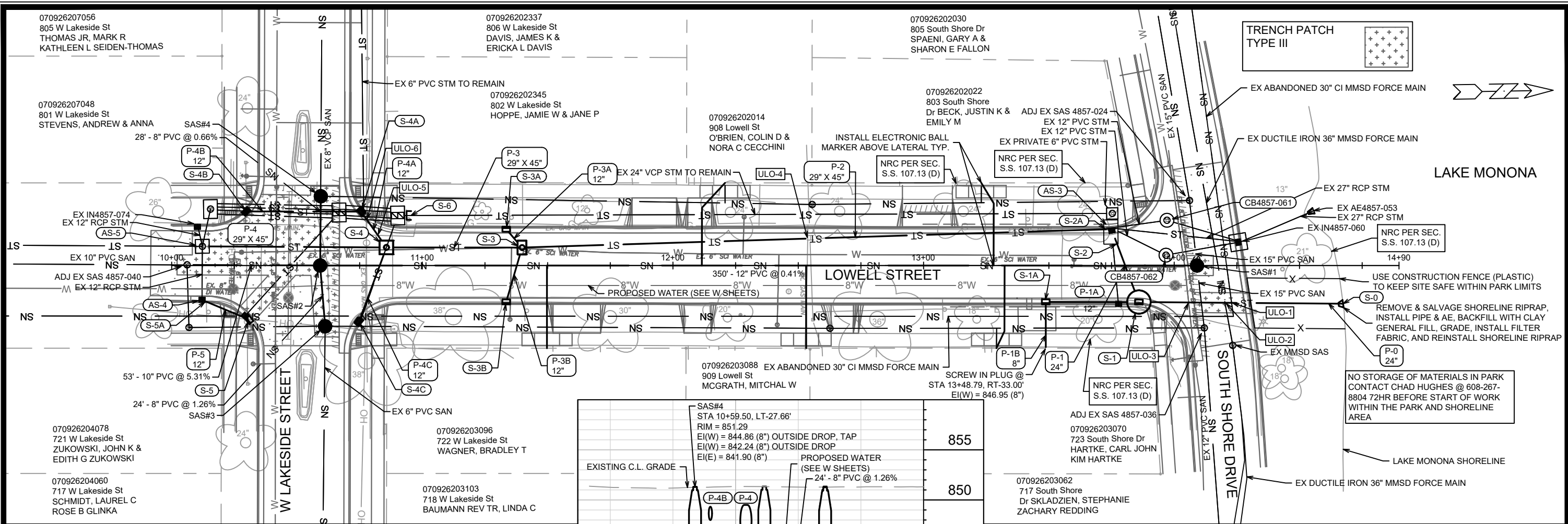
070926202014
908 Lowell St
O'BRIEN, COLIN D &
NORA C CECCHINI

070926202022
803 South Shore
Dr BECK, JUSTIN K &
EMILY M

ADJ EX SAS 4857-024
EX 12" PVC STM
EX 12" PVC STM
EX PRIVATE 6" PVC STM



LAKE MONONA



NOTE 1: PRECAST S-1: 8' DIA CDS W/ 9' SUMP. SEE REFERENCE DETAIL SHEETS U-3 AND U-4 FOR SPECIFICATIONS.

14078
MADISON, WI
CONTRACT NO: 8712

UTILITY PLAN & PROFILE PROPOSED
LOWELL ST RECONSTRUCTION

M:\DESIGN\Projects\14078\CAD\Sewers\14078SWR-PipeNetwork.dwg

14078
U-1

NO.	DATE	BY
1	10/20/24	U-1

070926207056
805 W Lakeside St
THOMAS JR, MARK R
KATHLEEN L SEIDEN-THOMAS

070926202337
806 W Lakeside St
DAVIS, JAMES K &
ERICKA L DAVIS

070926202030
805 South Shore Dr
SPAENI, GARY A &
SHARON E FALLON

070926207048
801 W Lakeside St
STEVENS, ANDREW & ANNA

070926202345
802 W Lakeside St
HOPPE, JAMIE W & JANE P

070926202022
803 South Shore
Dr BECK, JUSTIN K &
EMILY M

070926204078
721 W Lakeside St
ZUKOWSKI, JOHN K &
EDITH G ZUKOWSKI

070926203096
722 W Lakeside St
WAGNER, BRADLEY T

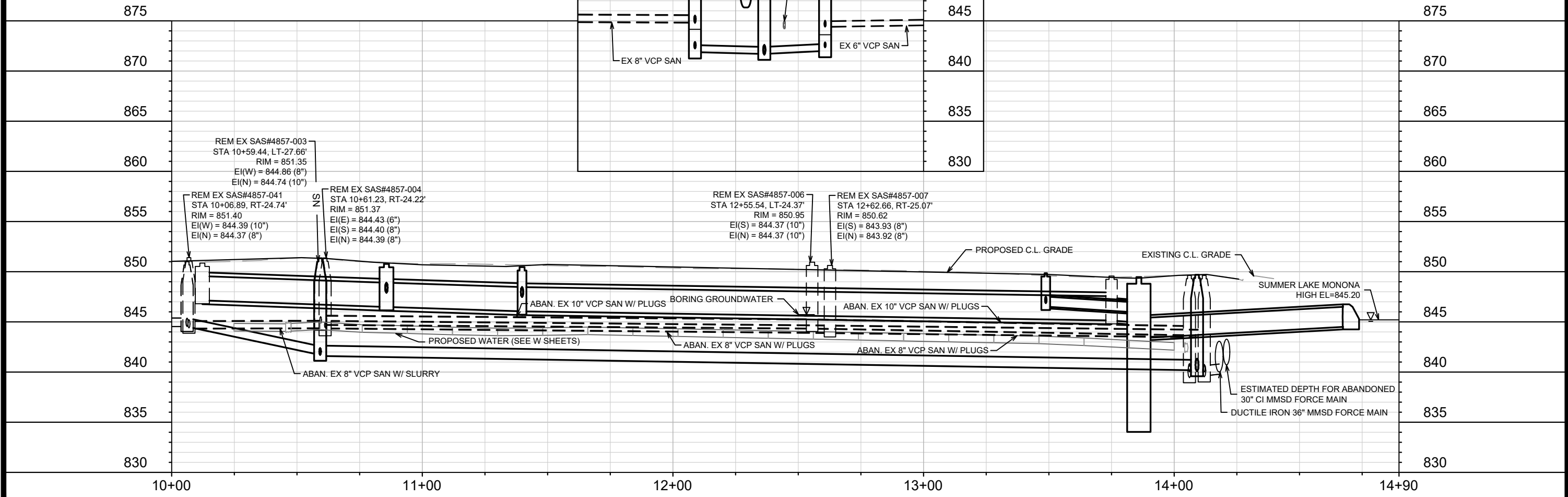
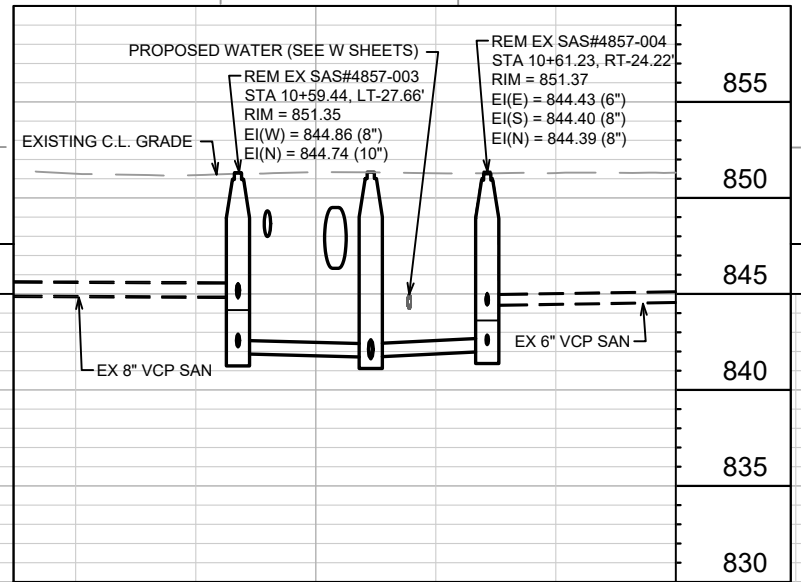
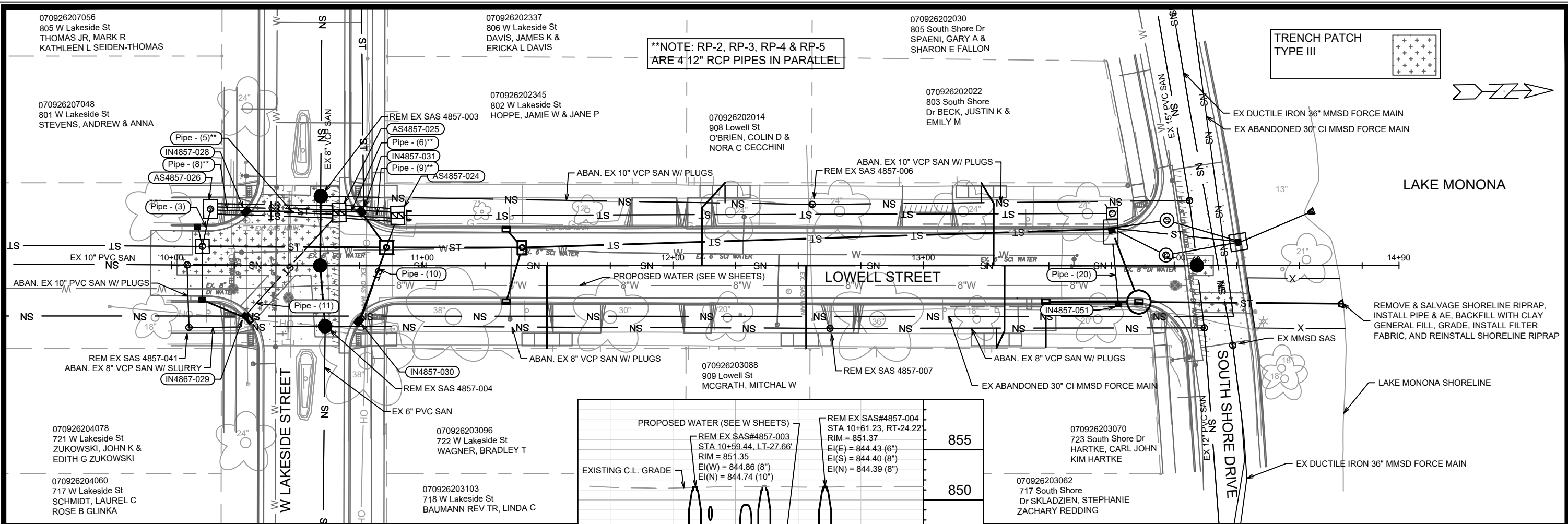
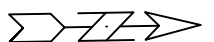
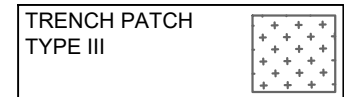
070926203070
723 South Shore Dr
HARTKE, CARL JOHN
KIM HARTKE

070926204060
717 W Lakeside St
SCHMIDT, LAUREL C
ROSE B GLINKA

070926203103
718 W Lakeside St
BAUMANN REV TR, LINDA C

070926203062
717 South Shore
Dr SKLADZIEN, STEPHANIE
ZACHARY REDDING

****NOTE: RP-2, RP-3, RP-4 & RP-5
ARE 4 12" RCP PIPES IN PARALLEL**



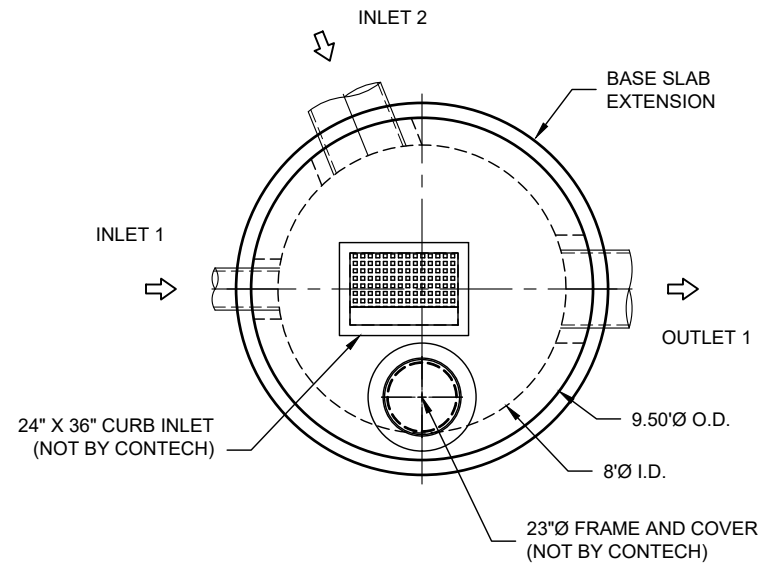
MARK	REVISION	DATE	BY
14078	U-2	3/5/2024	10:20 AM

14078
MADISON, WI
8712
CONTRACT NO:

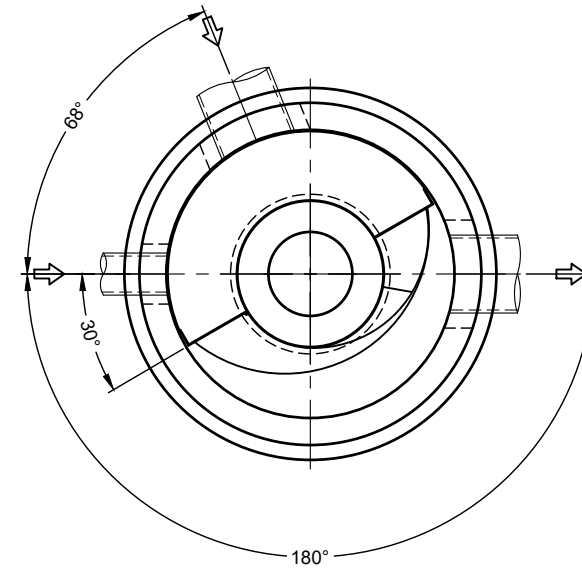
UTILITY PLAN & PROFILE REMOVALS
LOWELL ST RECONSTRUCTION
M:\DESIGN\Projects\14078\CAD\Servers\14078SWR-PipeNetwork.dwg



14078
U-2



PLAN VIEW
INTERNALS NOT SHOWN

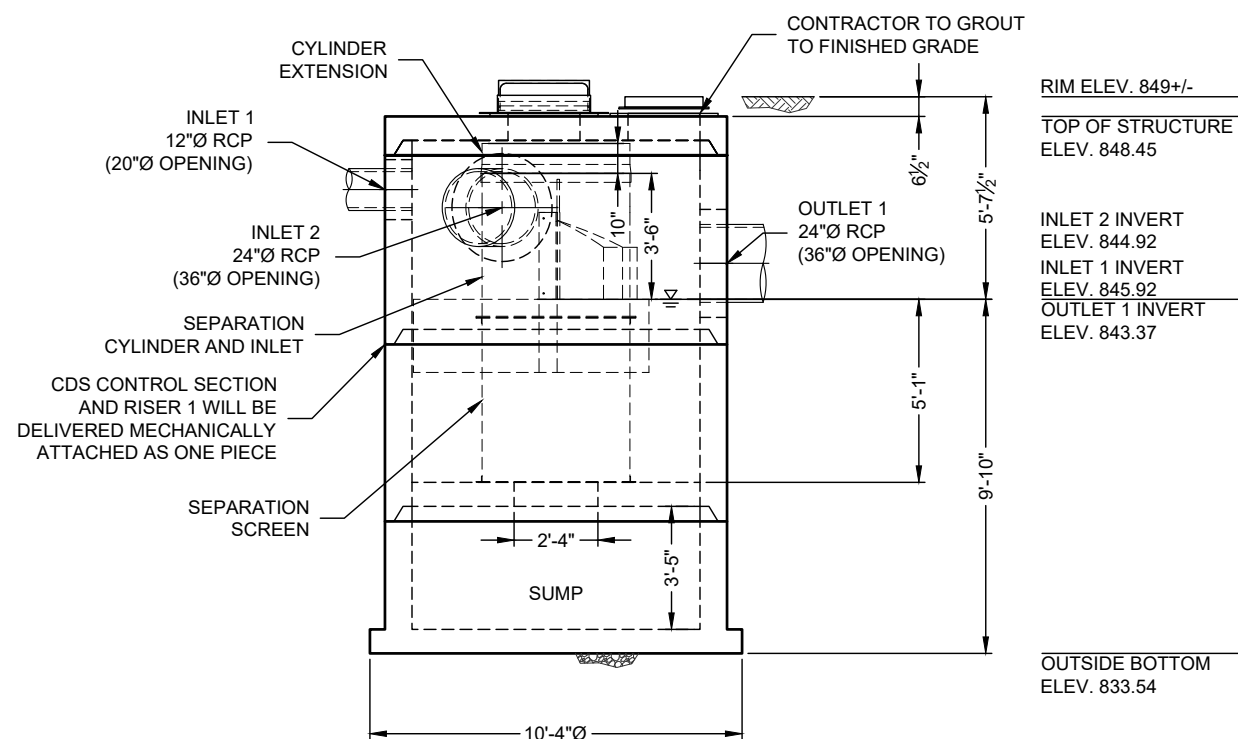


PLAN VIEW FOR PIPE ORIENTATION
TOP SLAB NOT SHOWN

INSTALLER TO TRIM CYLINDER
TO DIMENSIONED HEIGHT

MATERIAL LIST (PROVIDED BY CONTECH)

COUNT	DESCRIPTION	INSTALLED BY
1	4045-8 CONCENTRIC FIBERGLASS INSERT	CONTECH
1	4045, 2400 micron, 4.1' O.D. x 4.58' SCREEN, GREEN FLANGE UP	CONTECH
1	20, 30, 40 SERIES HARDWARE KIT	CONTECH
1	40 SERIES, 1.5 FT. TALL CYLINDER EXTENSION	CONTRACTOR
1	SEALANT FOR JOINTS	CONTRACTOR



ELEVATION VIEW

GENERAL NOTES

- CONTECH TO PROVIDE ALL MATERIALS UNLESS NOTED OTHERWISE.
- FOR FABRICATION DRAWINGS WITH DETAILED STRUCTURE DIMENSIONS AND WEIGHT, PLEASE CONTACT YOUR CONTECH ENGINEERED SOLUTIONS LLC REPRESENTATIVE. www.ContechES.com
- CDS WATER QUALITY STRUCTURE SHALL BE IN ACCORDANCE WITH ALL DESIGN DATA AND INFORMATION CONTAINED IN THIS DRAWING. CONTRACTOR TO CONFIRM STRUCTURE MEETS REQUIREMENTS OF PROJECT.
- STRUCTURE SHALL MEET AASHTO HS-20 LOAD RATING, ASSUMING EARTH COVER OF 0' - 2', AND GROUNDWATER ELEVATION AT, OR BELOW, THE OUTLET PIPE INVERT ELEVATION. ENGINEER OF RECORD TO CONFIRM ACTUAL GROUNDWATER ELEVATION. CASTINGS SHALL MEET AASHTO M306 AND BE CAST WITH THE CONTECH LOGO.
- IF REQUIRED, PVC HYDRAULIC SHEAR PLATE IS PLACED ON SHELF AT BOTTOM OF SCREEN CYLINDER. REMOVE AND REPLACE AS NECESSARY DURING MAINTENANCE CLEANING.
- CDS STRUCTURE SHALL BE PRECAST CONCRETE CONFORMING TO ASTM C-478 AND AASHTO LOAD FACTOR DESIGN METHOD.

INSTALLATION NOTES

- ANY SUB-BASE, BACKFILL DEPTH, AND/OR ANTI-FLOTATION PROVISIONS ARE SITE-SPECIFIC DESIGN CONSIDERATIONS AND SHALL BE SPECIFIED BY ENGINEER OF RECORD.
- CONTRACTOR TO PROVIDE EQUIPMENT WITH SUFFICIENT LIFTING AND REACH CAPACITY TO LIFT AND SET THE CDS MANHOLE STRUCTURE.
- CONTRACTOR TO INSTALL JOINT SEALANT BETWEEN ALL STRUCTURE SECTIONS AND ASSEMBLE STRUCTURE.
- CONTRACTOR TO PROVIDE, INSTALL, AND GROUT INLET AND OUTLET PIPE(S). MATCH PIPE INVERTS WITH ELEVATIONS SHOWN. ALL PIPE CENTERLINES TO MATCH PIPE OPENING CENTERLINES.
- CONTRACTOR TO TAKE APPROPRIATE MEASURES TO ASSURE UNIT IS WATER TIGHT, HOLDING WATER TO FLOWLINE INVERT MINIMUM. IT IS SUGGESTED THAT ALL JOINTS BELOW PIPE INVERTS ARE GROUTED.

STRUCTURE WEIGHT
APPROXIMATE HEAVIEST PICK = 37000 LBS.
STRUCTURE IS DELIVERED IN 3 PIECES

MAX FOOTPRINT = 10.33'Ø

CONTECH
PROPOSAL
DRAWING

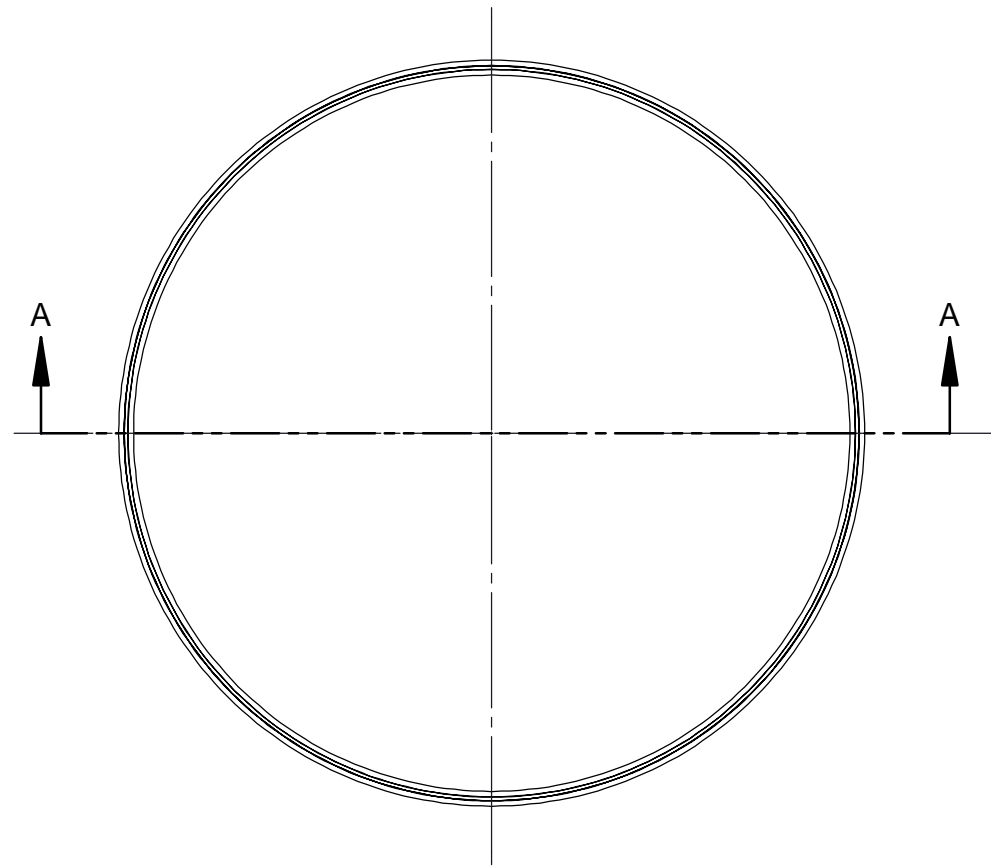
The design and information shown on this drawing is the property of CONTECH ENGINEERED SOLUTIONS LLC. It is to be used only for the project and location specified. It is not to be used for any other project or location without the written consent of CONTECH. Failure to comply with these terms and conditions shall constitute a breach of contract and shall result in the user's own liability and responsibility for such use. If discrepancies between the supplied information upon which the drawing is based and actual field conditions are encountered at site work progresses, these are to be immediately reported to the engineer of record for re-evaluation of the design. CONTECH accepts no liability for designs based on missing, incomplete or inaccurate information supplied by others.

MARK	DATE	REVISION DESCRIPTION	BY

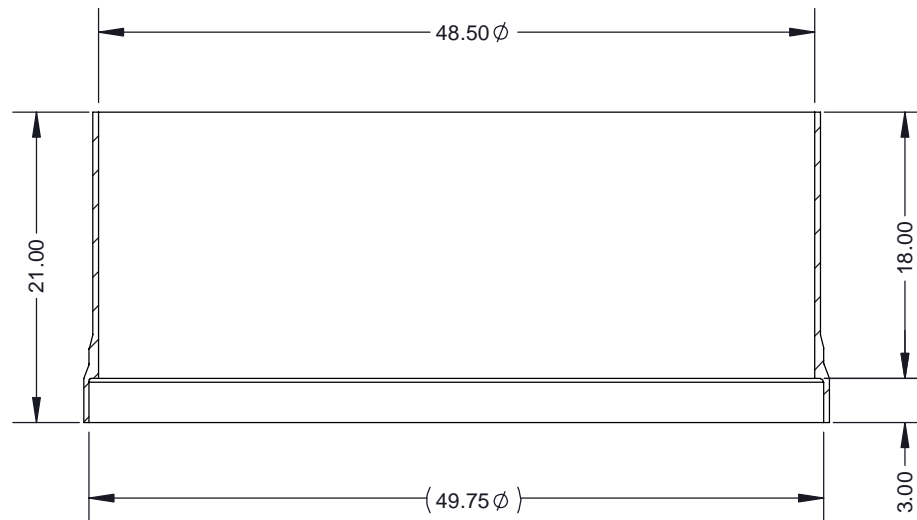
CDS4045-8-C - 788968-10
LOWELL ST.
MADISON, WI
SITE DESIGNATION: S-1

CONTECH
ENGINEERED SOLUTIONS LLC
www.ContechES.com
6160 Centre Pointe Dr., Suite 400, West Chester, OH 45380
603.338.1122 513.645.7000 513.645.7883 FAX
FOR PATENT INFORMATION, GO TO www.ContechES.com

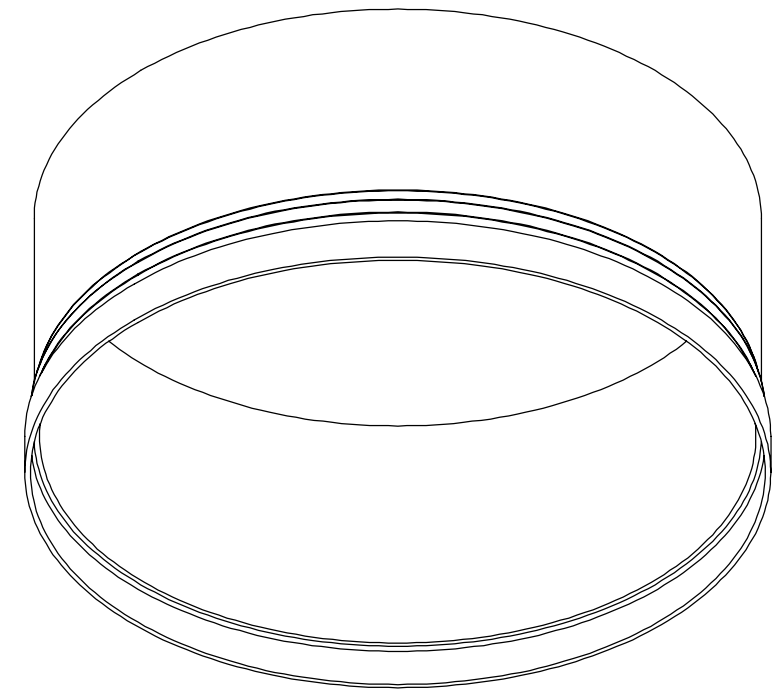
DATE:	02/02/24		
DESIGNED:	TNB	DRAWN:	CER
CHECKED:	TNB	APPROVED:	TNB
PROJECT No.:	788968	SEQUENCE No.:	10
SHEET:	U-3		



TOP VIEW



SECTION A-A



ISOMETRIC VIEW

NOTES:

1. SEE SITE SPECIFIC DRAWINGS FOR REQUIRED CYLINDER EXTENSION HEIGHT
2. SEE CYLINDER EXTENSION INSTALLATION GUIDE FOR ADDITIONAL INFORMATION

The design and information shown on this drawing is provided as a service to the project owner, engineer and contractor by Contech Engineered Solutions LLC, or one of its affiliated companies ("Contech"). Neither this drawing, nor any part thereof, may be used, reproduced or modified in any manner without the prior written consent of Contech. Failure to comply is done at the user's own risk and Contech expressly disclaims any liability or responsibility for such use.

If discrepancies between the supplied information upon which the drawing is based and actual field conditions are encountered as site work progresses, these discrepancies must be reported to Contech immediately for re-evaluation of the design. Contech accepts no liability for designs based on missing, incomplete or inaccurate information supplied by others.

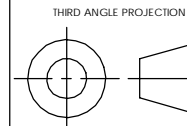


THIS PRODUCT MAY BE PROTECTED BY ONE OR MORE OF THE FOLLOWING U.S. PATENTS: 6,788,046; 6,641,720; 6,611,096; 6,881,788; RELATED FOREIGN PATENTS, OR OTHER PATENTS PENDING.



9025 Centre Pointe Dr., Suite 400, West Chester, OH 45069
800-338-1122 513-645-7000 513-645-7993 FAX

**REFERENCE DETAIL
1.5 FT CYLINDER EXTENSION
CDS - 40 SERIES**



UNLESS OTHERWISE SPECIFIED DIMENSIONS ARE IN INCHES

TOLERANCES:
FRACTIONAL $\pm 1/16$
ANGLES ± 1 DEGREE
TWO PLACE DECIMAL ± 0.06
THREE PLACE DECIMAL ± 0.030

PART NUMBER: 325-002788		
APPROVED BY: M. BROOKS	DRAWN BY: J. BELL	
APPROVED BY DATE: 2022.03.10	DRAWN BY DATE: 2022.02.11	REV: B
SCALE: N/A	U-4	

SANITARY SEWER SCHEDULE

LOWELL STREET ASSESSMENT DISTRICT 2024

SHEET NO.

PROJECT NO. 14078

U-5

SANITARY SEWER SCHEDULE

CITY OF MADISON

PROPOSED SANITARY STRUCTURES

SAS NO.	STATION	LOCATION (OFFSET)	TOP OF CASTING	E.I.	DEPTH	NOTES
LOWELL STREET						
SAS#1	14+09.12	CL	849.69	840.09	9.60	[3],[4]
SAS#2	10+59.24	CL	851.34	841.62	9.72	[3],[4]
SAS#3	10+61.23	RT-24.25	851.26	842.03	9.23	[2],[3],[4],[6]
SAS#4	10+59.50	LT-27.66	851.29	841.90	9.39	[5],[3],[4]

SANITARY STRUCTURES ADJUSTMENTS

STRUCTURE ID NO.	STATION	LOCATION (OFFSET)	EX. TOC ELEV.	PROP ELEV.	ADJUST DIFF.	NOTES
LOWELL STREET						
SAS 4857-024	14+06.11	LT-25.95	849.64	849.64	0.00	-
SAS 4857-040	10+06.14	LT-0.24	851.00	851.00	0.00	-
SAS 4857-036	14+12.01	RT-24.91	849.62	849.62	0.00	-

SANITARY STRUCTURE REMOVALS

SAS NO.	STATION	LOCATION (OFFSET)	TOP OF CASTING	E.I.	DEPTH	NOTES
LOWELL STREET						
SAS 4857-003	10+59.44	LT-27.66	851.35	844.74	6.61	-
SAS 4857-004	10+61.23	RT-24.25	851.26	844.12	7.14	-
SAS 4857-006	12+55.54	LT-24.37	850.95	844.37	6.58	-
SAS 4857-007	12+62.66	RT-25.07	850.62	843.92	6.70	-
SAS 4857-041	10+06.89	RT-24.74	851.40	844.37	7.03	-

PROPOSED SANITARY PIPES

FROM (DNSTM)	TO (UPSTM)	DWNSTRM E.I.	UPSTRM E.I.	PLAN (PAY) LGTH (FT)	SLOPE (%)	PIPE SIZE	PVC TYPE	NOTES
LOWELL STREET								
SAS#1	SAS#2	840.19	841.62	350	0.41%	12"	SDR-35	-
SAS#2	SAS 4857-040	841.72	844.54	53	5.31%	10"	SDR-35	[1]
SAS#2	SAS#4	841.72	841.90	28	0.66%	8"	SDR-35	-
SAS#2	SAS#3	841.72	842.03	24	1.26%	8"	SDR-35	-

SANITARY PIPES ABANDONMENTS

ABANDON FROM	ABANDON TO	TOTAL LGTH (FT)	PAY LGTH (FT)	PIPE SIZE	PIPE TYPE	NOTES
LOWELL STREET						
SAS 4857-024	SAS 4857-006	151	0	10"	VCP	PLUGS
SAS 4857-006	SAS 4857-003	196	0	10"	VCP	PLUGS
SAS 4857-036	SAS 4857-007	150	0	8"	VCP	PLUGS
SAS 4857-007	SAS 4857-004	202	0	8"	VCP	PLUGS
SAS 4857-004	SAS 4857-041	55	55	8"	VCP	SLURRY 0.7 CY
SAS 4857-041	SAS 4857-040	25	0	10"	PVC	PLUGS

SPECIFIC NOTES

- [1] TAP EXISTING STRUCTURE-PAID AS SANITARY TAP
- [2] 5' DIA SAS
- [3] SAS#1 - #4 INSTALL EXTERNAL SAS WRAP AROUND BARREL JOINTS IN CONFORMANCE WITH S.D.D. 5.7.2
- [4] SAS#1 - #4 INSTALL RIGID INTERNAL CHIMNEY SEAL IN CONFORMANCE WITH S.D.D. 5.7.17
- [5] OUTSIDE DROP (IE(W) = 842.24, IE(W) = 844.86 TAP)
- [6] INSIDE DROP (IE(E) = 842.36, IE(E) = 844.43 TAP)

STORM SEWER SCHEDULE

LOWELL STREET ASSESSMENT DISTRICT 2024	SHEET NO.
PROJECT NO. 14078	U-6
STORM SEWER SCHEDULE	
CITY OF MADISON	

PROPOSED STORM STRUCTURES

STRUC. NO.	STATION	LOCATION (OFFSET)	TYPE	TOP OF CASTING	E.I.	DEPTH	NOTES
LOWELL STREET							
S-0	14+67.41	RT-15.25	24" AE W/ GATE	-	845.50	-	[1]
S-1	13+85.92	RT-14.57	8' STORM TREATMENT	849.47	843.37	15.10	[2],[8]
S-1A	13+48.76	RT-14.50	H INLET	849.85	846.52	3.33	W/R-3067-7004-V
S-2	13+77.20	LT-8.58	TAP	-	845.14	-	-
S-2A	13+72.77	LT-14.53	TAP	-	845.14	-	-
S-3	11+39.79	LT-7.16	3' X 5' STORM SAS	850.45	846.05	4.40	FP,W/R-1550-0054,[9]
S-3A	11+33.50	LT-14.50	H INLET	850.64	847.52	3.12	W/R-3067-7004-VB
S-3B	11+33.48	RT-14.52	H INLET	850.63	847.58	3.05	W/R-3067-7004-VB
S-4	10+85.68	LT-7.22	5' X 5' STORM SAS	850.70	846.48	4.22	FP,W/R-1550-0054
S-4A	10+75.61	LT-21.52	H INLET	850.89	848.08	2.81	W/R-3067-7004-VB
S-4B	10+29.70	LT-21.58	H INLET	850.90	848.31	2.59	W/R-3067-7004-VB
S-4C	10+74.73	RT-22.42	H INLET	851.11	848.16	2.95	W/R-3067-7004-VB
S-5	10+30.87	RT-21.54	H INLET	850.59	848.05	2.54	W/R-3067-7004-VB
S-5A	10+13.60	RT-14.33	TAP	-	847.95	-	-
S-6	10+95.54	LT-19.98	PLUG	-	-	-	[5]

STORM STRUCTURE ADJUSTMENTS

ADJUST NO.	STATION	LOCATION (OFFSET)	TYPE	EX. TOC. ELEV.	ADJUST ELEV.	ADJUST DIFF.	NOTES
LOWELL STREET							
AS-1	13+97.12	LT-18.06	5' DIA CATCH BASIN	849.38	849.45	0.07	-
AS-2	13+96.71	LT-4.14	5' DIA CATCH BASIN	849.57	849.53	-0.04	-
AS-3	13+75.02	LT-14.54	8' X 4' STORM SAS	849.54	849.57	0.03	-
AS-4	10+12.11	RT-13.71	H INLET	850.48	850.48	0.00	-
AS-5	10+12.23	LT-7.65	5' X 5' STORM SAS	850.86	850.86	0.00	[10]

REMOVE STORM STRUCTURES

STRUC. NO.	STATION	LOCATION (OFFSET)	TYPE	TOP OF CASTING	E.I.	DEPTH	NOTES
LOWELL STREET							
RS-1	13+77.84	RT-16.35	H INLET	849.44	846.27	3.17	
RS-2	10+90.17	LT-19.96	6' X 6' STORM SAS	851.07	847.06	4.01	
RS-3	10+76.60	LT-22.49	3' X 6' STORM SAS	850.83	847.19	3.64	
RS-4	10+66.78	LT-21.16	4' X 6' STORM SAS	851.91	847.17	4.74	
RS-5	10+28.96	LT-22.24	3' X 6' STORM SAS	850.97	847.20	3.77	
RS-6	10+15.49	LT-22.52	6' X 6' STORM SAS	851.1	847.14	3.96	
RS-7	10+75.13	RT-22.75	H INLET	850.95	847.65	3.30	
RS-8	10+28.57	RT-20.90	H INLET	851.05	847.73	3.32	

SPECIFIC NOTES

- [1] REMOVE & SALVAGE SHORELINE RIPRAP, INSTALL PIPE & AE, BACKFILL WITH CLAY GENERAL FILL, GRADE, INSTALL FILTER FABRIC (PAID AS BID ITEM 20256 - RIPRAP FILTER FABRIC, TYPE HR), AND REINSTALL SHORELINE RIPRAP
- [2] PRECAST S-1: 8' STORM TREATMENT W/ 9' SUMP, PAID AS CDS STORM TREATMENT SYSTEM 900xx. SEE REFERENCE DETAIL U-3 AND U-4 FOR SPECIFICATIONS.
- [3] TAP EX 4' X 8' STORM SAS AS-3 (PAID FOR AS STORM TAP)
- [4] EX 5' X 5' STORM SAS AS-5 IS SAID TO HAVE KNOCKOUT FOR DOWN STREAM IN AS BUILT. IF NOT TAP (PAID FOR AS STORM TAP)
- [5] ONLY PLUG UPSTREAM SIDE OF EX 24" VCP STM PIPE. KEEP LIVE IN CASE RESIDENTS REQUIRE PRIVATE CONNECTION
- [6] TAP EX H INLET AS-4 (PAID FOR AS STORM TAP)
- [7] 12" RCP PIPE IS 4 PARALLEL 12" RCP PIPES. IN LENGTHS WHERE PIPE IS INSTALLED 2 PIPES ARE INCIDENTAL REMOVALS
- [8] W/R-1550-0054 & R-3067-7004-VB AND 9' SUMP
- [9] 3' x 5' PAID AS BID ITEM 900XX - 3' X 5' CAST IN PLACE SAS
- [10] PLUG STRUCTURE AFTER REMOVAL OF RP-6 (PAID AS BID ITEM 20336 - PIPE PLUG(STORM))
- [11] PIPE DESIGNED WITH BACK PITCH, MUST BE TYPE II-DOUBLE WALLED PIPE

PROPOSED STORM PIPES

PIPE NO.	FROM (DNSTM)	TO (UPSTM)	DISCH. E.I.	INLET E.I.	PLAN (PAY) LGTH (FT)	PIPE LGTH (FT)	SLOPE (%)	PIPE SIZE	TYPE	NOTES
LOWELL STREET										
P-0	S-0	S-1	845.50	843.37	82	78	-2.75%	24"	TYPE II	[11]
P-1	S-1	AS-3	844.92	845.14	31	23	0.94%	24"	RCP	[3]
P-1A	S-1	S-1A	845.92	846.52	37	32	1.89%	12"	RCP	-
P-1B	S-1A	STA 13+48.79, RT-33.00	846.85	846.95	19	18	0.57%	8"	TYPE II	-
P-2	AS-3	S-3	845.14	846.05	235	232	0.39%	29"x45"	RCP	[3]
P-3	S-3	S-4	846.05	846.48	54	50	0.86%	29"x45"	RCP	-
P-3A	S-3	S-3A	847.47	847.52	10	6	0.86%	12"	RCP	-
P-3B	S-3	S-3B	847.47	847.58	23	19	0.58%	12"	RCP	-
P-4	S-4	AS-5	846.48	847.14	74	69	0.96%	29"x45"	RCP	[4]
P-4A	S-4	S-4A	847.90	848.08	17	13	1.40%	12"	RCP	-
P-4B	S-4A	S-4B	848.08	848.31	46	43	0.53%	12"	RCP	-
P-4C	S-4	S-4C	847.90	848.16	32	27	0.95%	12"	RCP	-
P-5	AS-4	S-5	847.95	848.05	20	17	0.59%	12"	RCP	[6]

REMOVE STORM PIPES

REMOVE NO.	REMOVE FROM	REMOVE TO	LGTH (FT)	PAY LGTH (FT)	PIPE SIZE	PIPE TYPE	NOTES
LOWELL STREET							
RP-1	RS-2	IN4857-059	32	0	12"	RCP	-
RP-2	RS-3	RS-4	13	52	12"	RCP	[8]
RP-3	RS-4	RS-5	10	20	12"	RCP	[8]
RP-4	RS-5	RS-6	37	74	12"	RCP	[8]
RP-5	RS-6	RS-7	13	52	12"	RCP	[8]
RP-6	RS-7	AS4857-072	15	15	24"	RCP	-
RP-7	RS-8	RS-3	45	6	12"	RCP	-
RP-8	RS-9	RS-5	57	54	12"	RCP	-

NOTE: PLAN LENGTH (PAY LENGTH) IS FROM CENTER OF STRUCTURE TO CENTER OF STRUCTURE. PIPE LENGTH IS ACTUAL LENGTH OF PIPE FROM STRUCTURE WALL TO STRUCTURE WALL. SLOPE CALCULATED USING PIPE LENGTH.

STANDARD NOTES:

- ABBREVIATIONS: AE = APRON ENDWALL; RCP = REINFORCED CONCRETE PIPE; HERCP = HORIZONTAL ELLIPTICAL REINFORCED CONCRETE PIPE; DNA = DOES NOT APPLY; SAS = SEWER ACCESS STRUCTURE; LP = LOW POINT INLET STRUCTURE; FP = FIELD POURED STRUCTURE; TR = TOP OF CONCRETE ROOF; NCM = NO CROWN MATCH FOR PIPES; UD = UNDERDRAIN
- TOP OF CASTING GRADE GIVEN IS THE TOP OF CURB FOR INLET STRUCTURES AND THE FLOWLINE OF THE CLOSED CASTING FOR SASs.
- TOP OF CONCRETE ROOF (TR) IS 1.25 BELOW TOP OF CASTING UNLESS OTHERWISE NOTED.
- ALL REINFORCED CONCRETE PIPES TO BE CLASS III UNLESS OTHERWISE NOTED.
- SURVEYOR TO CONFIRM THAT ALL INLET STATION / OFFSETS LINE UP WITH PROPOSED CURB AND GUTTER.
- ALL REBAR FOR FIELD POUR STRUCTURES SHALL BE EPOXY COATED. ANY EXPOSED STEEL SHALL BE TOUCHED UP OR RECOATED PRIOR TO USE.
- ALL FIELD POURED SAS STORM STRUCTURES SHALL BE CONSTRUCTED IN ACCORDANCE WITH STANDARD DETAIL DRAWING 5.7.3.
- ALL PRECAST SAS STORM STRUCTURES SHALL BE CONSTRUCTED IN ACCORDANCE WITH STANDARD DETAIL DRAWING 5.7.5.
- ALL STRUCTURES CALLED OUT AS FIELD POURED SHALL BE FIELD POURED. ALL OTHER STRUCTURES (NOT INDICATED AS FIELD POURED) SHALL BE SUBMITTED TO CITY ENGINEERING FOR APPROVAL IF PRECAST STRUCTURES ARE PREFERRED. CONTACT TODD CHOJNOWSKI OF CITY ENGINEERING AT (608) 266-4094 FOR PRECAST APPROVALS, FAX SHOP DRAWINGS TO (608)264-9275, OR EMAIL SHOP DRAWINGS TO TCHOJNOWSKI@CITYOFMADISON.COM.

STORM SEWER SCHEDULE

LOWELL STREET ASSESSMENT DISTRICT 2024

SHEET NO.

PROJECT NO. 14078

U-7

STORM SEWER SCHEDULE

CITY OF MADISON

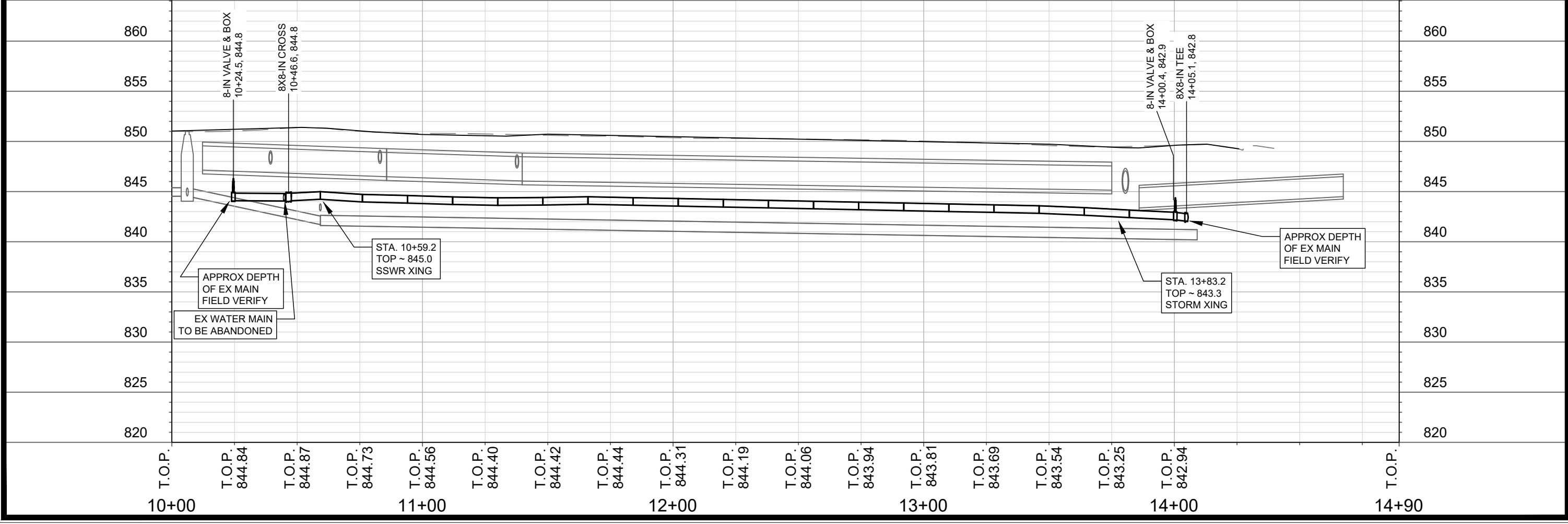
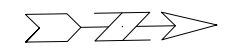
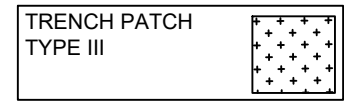
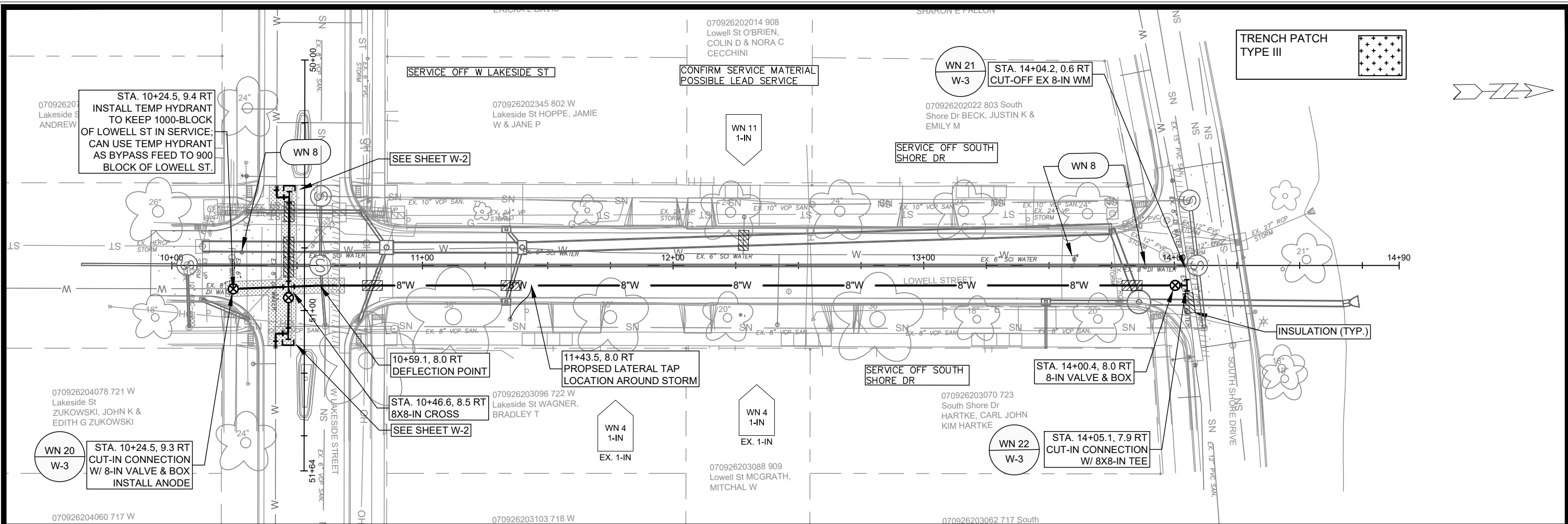
STORM SEWER ULOs (5 ADDITIONAL UNDISTRIBUTED ULOs INCLUDED)

ULO NO.	STATION	LOCATION (OFFSET)	TYPE	TOP ELEV.	NOTES
LOWELLSTREET					
ULO-1	14+22.92	RT-14.88	MMSD SAN	-	-
ULO-2	14+20.47	RT-14.86	MMSD SAN	-	-
ULO-3	14+05.78	RT-14.74	WATER	-	-
ULO-4	12+53.78	LT-10.72	GAS	-	-
ULO-5	10+82.27	LT-12.06	GAS	-	-
ULO-6	10+77.93	LT-18.30	GAS	-	-

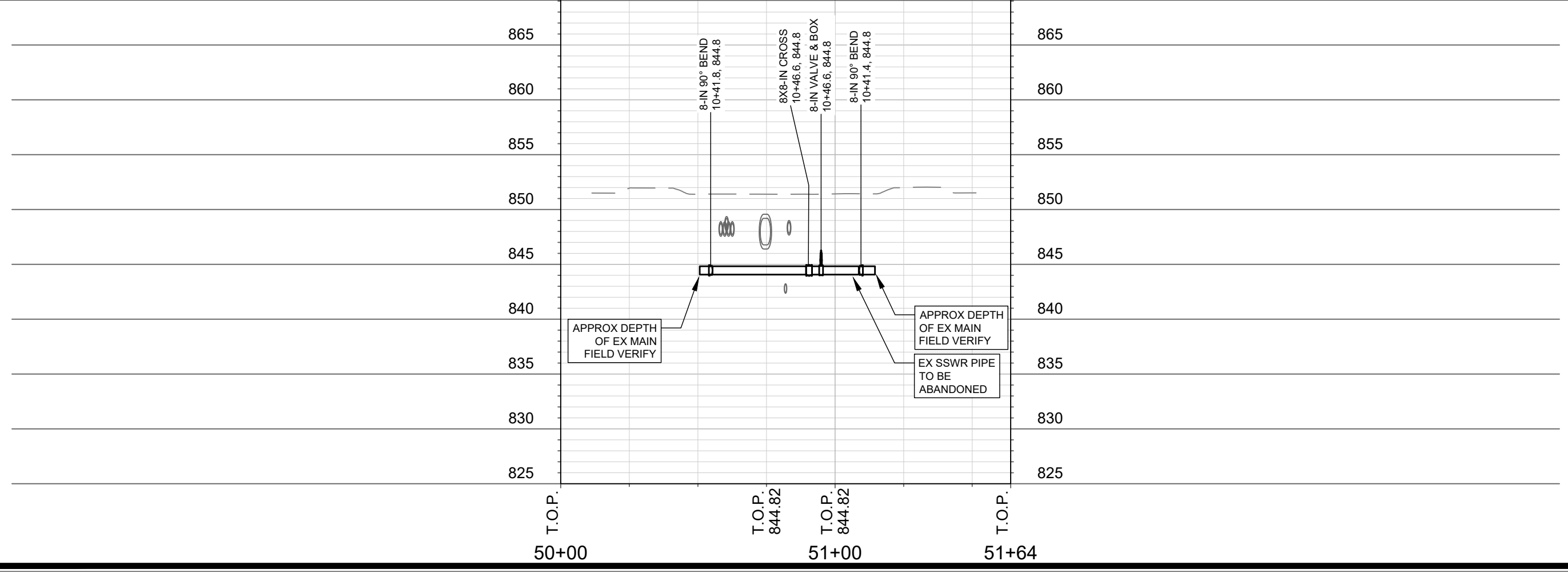
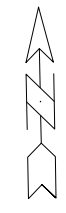
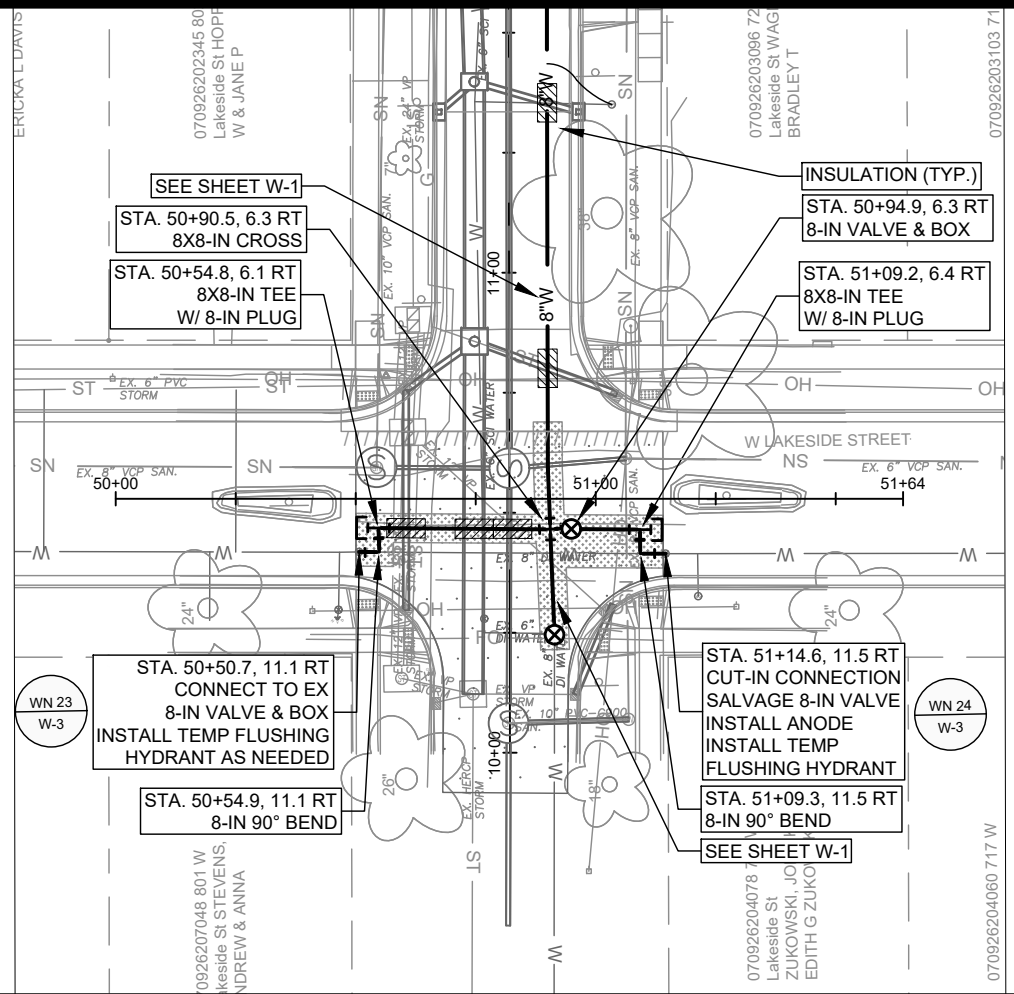
STANDARD NOTES:

- ABBREVIATIONS: AE = APRON ENDWALL; RCP = REINFORCED CONCRETE PIPE; HERCP = HORIZONTAL ELLIPTICAL REINFORCED CONCRETE PIPE; DNA = DOES NOT APPLY; SAS = SEWER ACCESS STRUCTURE; LP = LOW POINT INLET STRUCTURE; FP = FIELD POURED STRUCTURE; TR = TOP OF CONCRETE ROOF; NCM = NO CROWN MATCH FOR PIPES; UD = UNDERDRAIN
- TOP OF CASTING GRADE GIVEN IS THE TOP OF CURB FOR INLET STRUCTURES AND THE FLOWLINE OF THE CLOSED CASTING FOR SASs.
- TOP OF CONCRETE ROOF (TR) IS 1.25 BELOW TOP OF CASTING UNLESS OTHERWISE NOTED.
- ALL REINFORCED CONCRETE PIPES TO BE CLASS III UNLESS OTHERWISE NOTED.
- SURVEYOR TO CONFIRM THAT ALL INLET STATION / OFFSETS LINE UP WITH PROPOSED CURB AND GUTTER.
- ALL REBAR FOR FIELD POUR STRUCTURES SHALL BE EPOXY COATED. ANY EXPOSED STEEL SHALL BE TOUCHED UP OR RECOATED PRIOR TO USE.
- ALL FIELD POURED SAS STORM STRUCTURES SHALL BE CONSTRUCTED IN ACCORDANCE WITH STANDARD DETAIL DRAWING 5.7.3.
- ALL PRECAST SAS STORM STRUCTURES SHALL BE CONSTRUCTED IN ACCORDANCE WITH STANDARD DETAIL DRAWING 5.7.5.
- ALL STRUCTURES CALLED OUT AS FIELD POURED SHALL BE FIELD POURED. ALL OTHER STRUCTURES (NOT INDICATED AS FIELD POURED) SHALL BE SUBMITTED TO CITY ENGINEERING FOR APPROVAL IF PRECAST STRUCTURES ARE PREFERRED. CONTACT TODD CHOJNOWSKI OF CITY ENGINEERING AT (608) 266-4094 FOR PRECAST APPROVALS, FAX SHOP DRAWINGS TO (608)264-9275, OR EMAIL SHOP DRAWINGS TO TCHOJNOWSKI@CITYOFMADISON.COM.

SPECIFIC NOTES



14078	MADISON, WI	8712	CONTRACT NO:
LOWELL ST - WATER PLAN & PROFILE LOWELL ST RECONSTRUCTION M:\DESIGN\Projects\14078\CAD\Water\14078-WU-Lowell St.dwg			
14078	W-1		



14078 W-2	14078 W-2
W LAKESIDE STREET - WATER PLAN & PROFILE LOWELL ST RECONSTRUCTION	
M:\DESIGN\Projects\14078\CAD\Water\14078-WU-Lowell St.dwg	
14078 CONTRACT NO.:	8712 CONTRACT NO.:
MADISON, WI	MADISON, WI
Date: 3/4/2024 3:18 PM Scale: 1" = 40'	Date: 3/4/2024 3:18 PM Scale: 1" = 40'
Designed By: R.J.N. MARK	Designed By: R.J.N. MARK
REVISION	REVISION
BY	BY



1" = 100'

- WN 20: CUT-IN CONNECTION.**
ISOLATION VALVES:
 - V-6518 (LOWELL ST & W LAKESIDE ST)
 - V-6515 (LOWELL ST & EMERSON ST)
PROVIDE NOTICE:
 - 1009, 1012, 1013, 1014 LOWELL ST
- WN 21: CUT-OFF EX 8-IN WM.**
ISOLATION VALVES:
 - V-35 (LOWELL ST & SOUTH SHORE DR)
 - V-36 (LOWELL ST & SOUTH SHORE DR)
 - V-38 (LOWELL ST & SOUTH SHORE DR)
PROVIDE NOTICE:
 - 908, 909 LOWELL ST & 722 W LAKESIDE ST WHEN SWITCHING TO BYPASS.
- WN 22: CUT-IN CONNECTION.**
ISOLATION VALVES:
 - V-35 (LOWELL ST & SOUTH SHORE DR)
 - V-36 (LOWELL ST & SOUTH SHORE DR)
 - V-38 (LOWELL ST & SOUTH SHORE DR)
PROVIDE NOTICE:
 - NONE.
- WN 23: CUT-IN CONNECTION.**
ISOLATION VALVES:
 - V-22 (W LAKESIDE ST & S PARK ST)
 - V-8632 (LOWELL ST & W LAKESIDE ST)
PROVIDE NOTICE:
 - 801, 802, 805, 806, 809, 810, 813, 814, 817, 818, 821, 822, 825, 826, 829, 830, 833, 834, 837, 838, 840, 844, 848 W LAKESIDE ST.
 - 999, 1017, 1021 S PARK ST
 - OUTAGE TO OCCUR ON MONDAY
- WN 24: CUT-IN CONNECTION.**
ISOLATION VALVES:
 - V-8 (WHITTIER ST & W LAKESIDE ST)
 - V-9 (WHITTIER ST & W LAKESIDE ST)
 - V-10 (WHITTIER ST & W LAKESIDE ST)
 - V-27 (LOWELL ST & W LAKESIDE ST)
PROVIDE NOTICE:
 - 701, 702, 705, 706, 709, 710, 713, 714, 717, 718, 721 W LAKESIDE ST.

DISCLAIMER NOTE:
 THE WATER IMPACT PLAN IS PROVIDED FOR REFERENCE PURPOSES TO AID PLANNING CONNECTION POINT ISOLATION AND PREPARING NOTIFICATION LISTS DURING PLANNED OUTAGES. REQUEST ANY ALTERNATIVE CONNECTION METHODS IN WRITING, PER SPECS.

DATE	BY
REVISION	
MARK	
Designed By: RUM	Date: 3/14/2024 3:19 PM
14078	W-3

14078
 MADISON, WI
 CONTRACT NO: 8712

WATER IMPACT PLAN
 LOWELL ST RECONSTRUCTION
 M:\DESIGN\Projects\14078\CAD\Water\14078 WU ImpactPlan.dwg



14078
 W-3

CONSTRUCTION NOTES:

1. CONSTRUCT NEW WATER MAIN 6.0' BELOW FINISHED GRADE, UNLESS OTHERWISE NOTED. INSULATE MAIN WITH POLYSTYRENE BOARD AT STORM CROSSINGS AND OTHER AREAS IDENTIFIED BY ENGINEER AS HAVING INADEQUATE COVER.
2. VERIFY SIZE OF EXISTING WATER SERVICES AND RECONNECT SERVICES AS INDICATED.
3. MINIMIZE DISRUPTION OF SERVICE TO CUSTOMERS. NOTIFY PER CONTRACT REQUIREMENTS OF ANY PLANNED WATER OUTAGE.

- WN-1 REPLACE THE EXISTING LEAD SERVICE WITH A NEW COPPER SERVICE.
- WN-2 EXTEND AND RECONNECT THE EXISTING COPPER SERVICE TO THE NEW WATER MAIN.
- WN-3 EXISTING SERVICE TO BE ABANDONED WHEN THE WATER MAIN IS CUT OFF.
- WN-4 DISCONNECT FROM THE OLD WATER MAIN AND RECONNECT THE EXISTING COPPER WATER SERVICE LATERAL TO THE NEW WATER MAIN.
- WN-5 RELOCATE THE EXISTING FIRE HYDRANT.
- WN-6 ABANDON WATER VALVE ACCESS STRUCTURE.
- WN-7 FURNISH AND INSTALL THE NEW TOP SECTION FOR THE WATER ACCESS STRUCTURE.
- WN-8 ABANDON THE VALVE BOX.
- WN-9 FURNISH THE DITCH, COMPACTION, AND ALL MATERIALS AND LABOR FOR THE INSTALLATION OF NEW SERVICE LATERAL.
- WN-10 REMOVE AND SALVAGE EXISTING HYDRANT
- WN-11 REPLACE THE EXISTING COPPER SERVICE WITH A COPPER SERVICE
- WN-20+ SEE WATER IMPACT PLAN FOR CONNECTION POINT ISOLATION AND WATER SHUT-OFF NOTIFICATION INFORMATION.

WATER UTILITY ULO SCHEDULE				
ULO	UTILITY	STATION	OFFSET	SHEET

***ESTIMATE OF MATERIALS SUPPLIED BY CONTRACTOR:**

DESCRIPTION	QUANTITY	UNIT
FURNISH AND INSTALL 8 INCH PIPE & FITTINGS	460	LNFT
FURNISH AND INSTALL 8-INCH WATER VALVE	3	EACH
REPLACE 1-INCH SERVICE LATERAL	1	EACH
RECONNECT 1-INCH SERVICE LATERAL	2	EACH
CUT-IN OR CONNECT TO EXISTING WATER SYSTEM	4	EACH
CUT OFF EXISTING WATER MAIN	1	EACH
ABANDON WATER VALVE BOX	3	EACH
STYROFOAM INSULATION BOARDS	10	EACH
8-IN MJ PLUG	2	EACH
8X8-IN CROSS	1	EACH
8-IN 90° BEND	2	EACH
8X8-IN TEE	3	EACH
INSTALL ANODE	2	EACH

***ESTIMATE OF MATERIALS SALVAGED:**

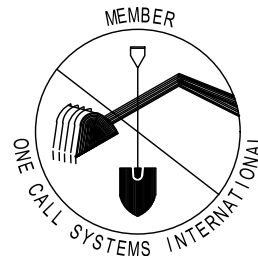
8-IN VALVE	1	SALVAGE
------------	---	---------

** ESTIMATE OF MATERIALS IS FOR INFORMATION ONLY. ENGINEER DOES NOT GUARANTEE ACCURACY OF MATERIAL TAKE-OFF.*

TO OBTAIN LOCATION OF PARTICIPANTS' UNDERGROUND FACILITIES BEFORE YOU DIG IN WISCONSIN

CALL DIGGERS HOTLINE TOLL FREE
811 OR 1-800-242-8511
FAX-A-LOCATE 1-800-338-3860
TDD (FOR HEARING IMPAIRED) 1-800-542-2289

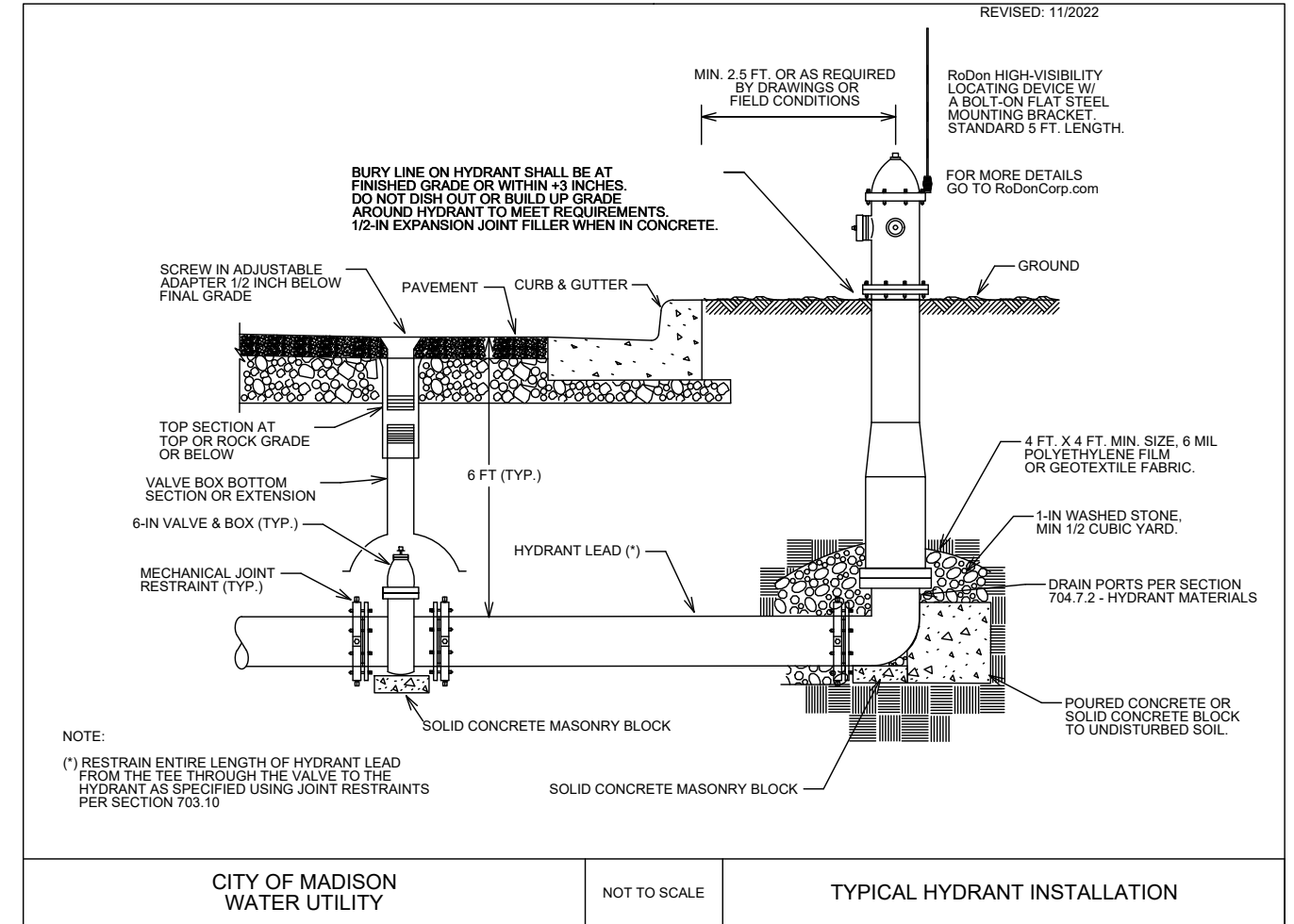
WIS. STATUTE 182.0175 (1974) REQUIRES MIN. OF 3 WORK DAYS NOTICE BEFORE YOU EXCAVATE.



DISCLAIMER NOTE: UTILITY LOCATIONS SHOWN ARE APPROXIMATE ONLY. IT SHALL BE THE CONTRACTOR'S RESPONSIBILITY TO DETERMINE THE EXACT HORIZONTAL AND VERTICAL LOCATION OF ALL EXISTING UNDERGROUND AND OVERHEAD UTILITIES PRIOR TO COMMENCING WORK.

PART VII - WATER MAINS AND SERVICE LATERALS

DETAIL DRAWING NO. 7.04
REVISED: 11/2022



CITY OF MADISON
WATER UTILITY

NOT TO SCALE

TYPICAL HYDRANT INSTALLATION

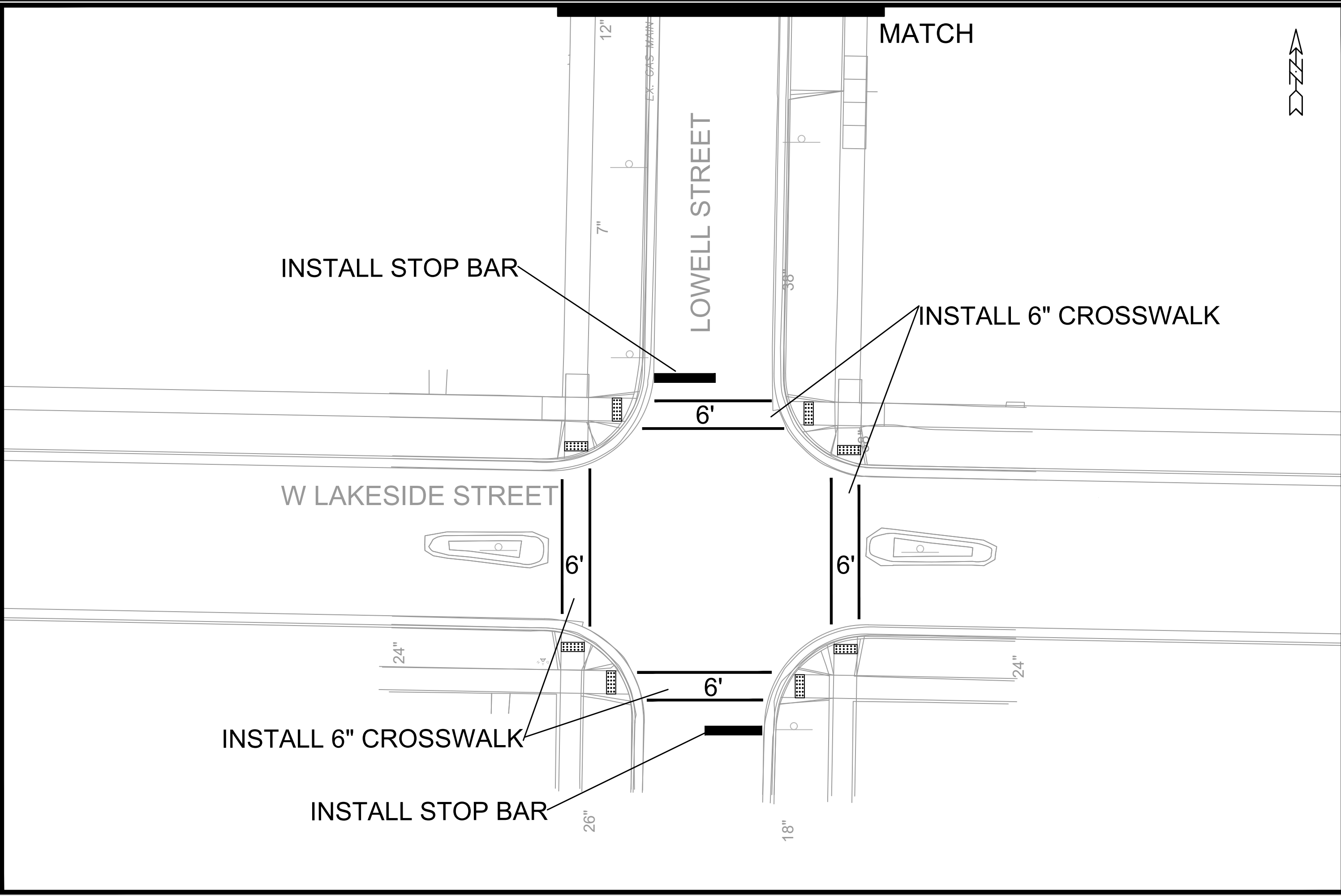
MARK	REVISION	DATE	BY

14078
MADISON, WI
8712
CONTRACT NO:

WATER ESTIMATE OF MATERIALS
LOWELL ST RECONSTRUCTION
M:\DESIGN\Projects\14078\CAD\Water\14078 WU Materials.dwg



14078
W-4



MATCH

LOWELL STREET

W LAKESIDE STREET

INSTALL STOP BAR

INSTALL 6" CROSSWALK

INSTALL 6" CROSSWALK

INSTALL STOP BAR



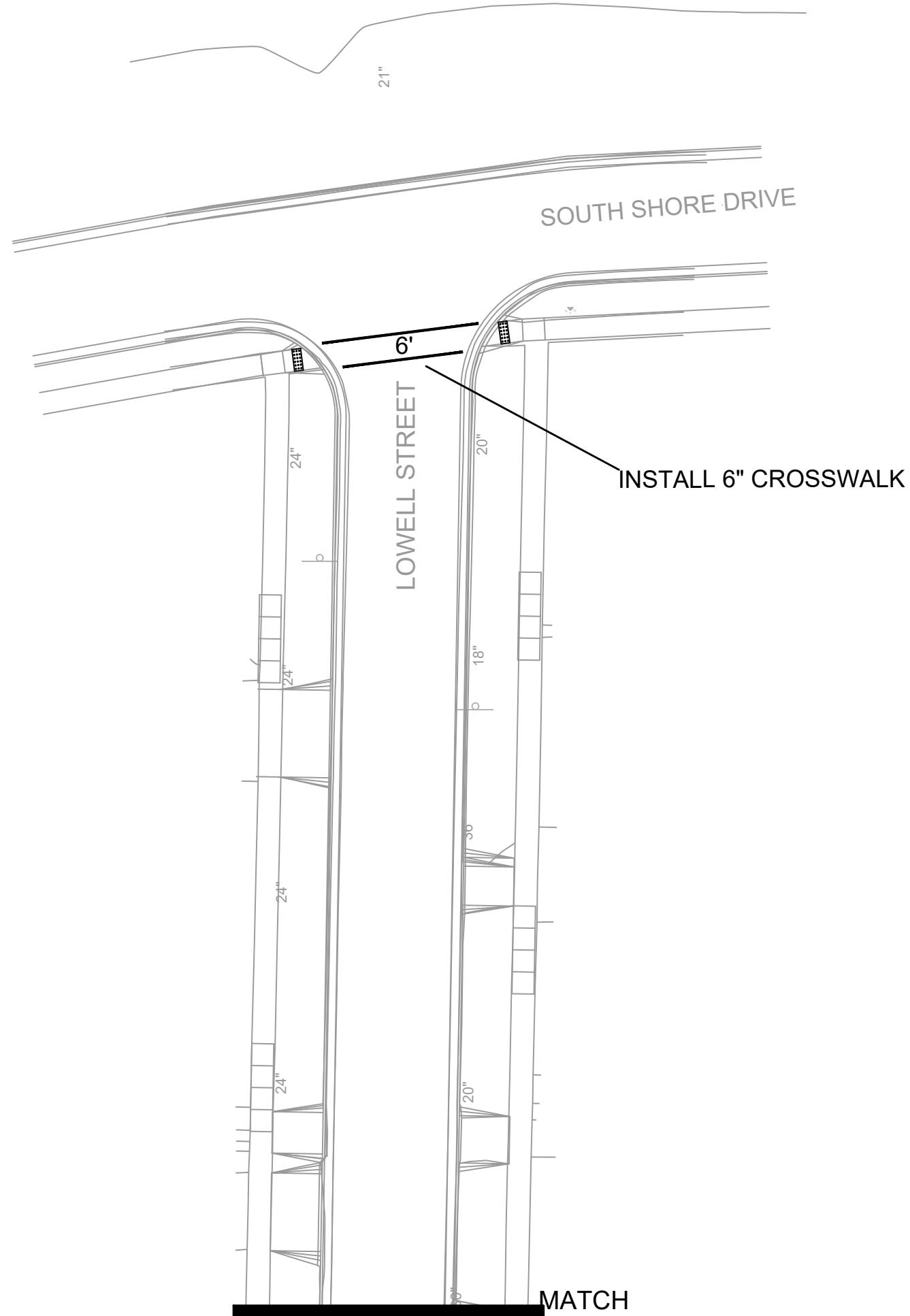
MARK	REVISION	DATE	BY
14078	14078	3/17/2024	Custom

14078
MADISON, WI
CONTRACT NO: 8712

PAVEMENT MARKING PLAN
LOWELL ST RECONSTRUCTION
M:\DESIGN\Projects\14078\CAD\Traffic\14078EN-PVM.dwg



14078
M-1



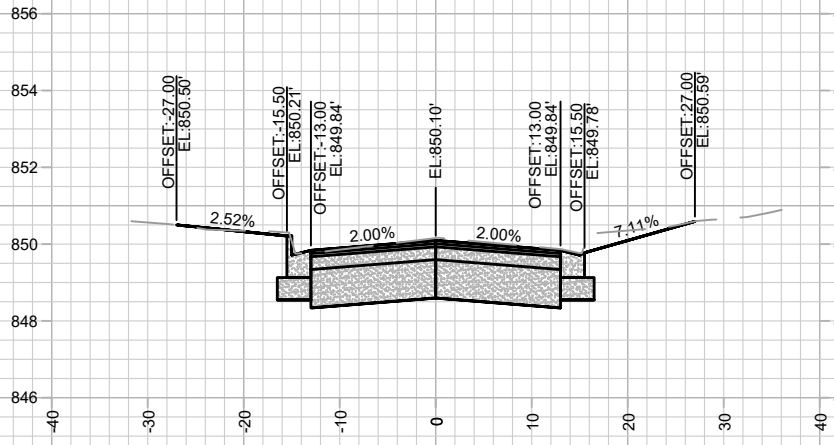
14078
M-2

PAVEMENT MARKING PLAN
LOWELL ST RECONSTRUCTION
M:\DESIGN\Projects\14078\CAD\Traffic\14078EN-PVM.dwg

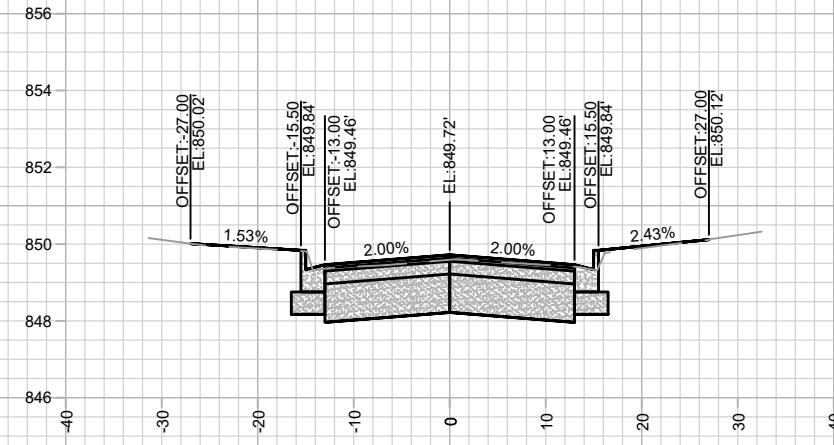
14078
MADISON, WI
8712

CONTRACT NO:

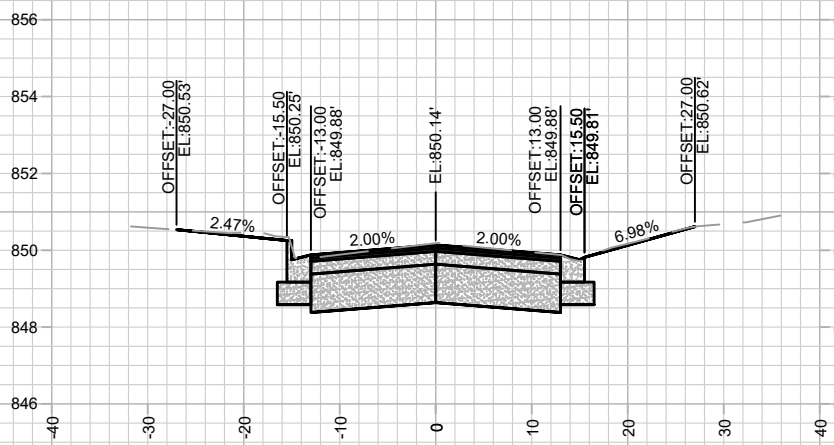
MARK	REVISION	DATE	BY
14078	14078	3/17/2024	3:19 PM
Designed By: ##	Scale: Custom		
M-2			



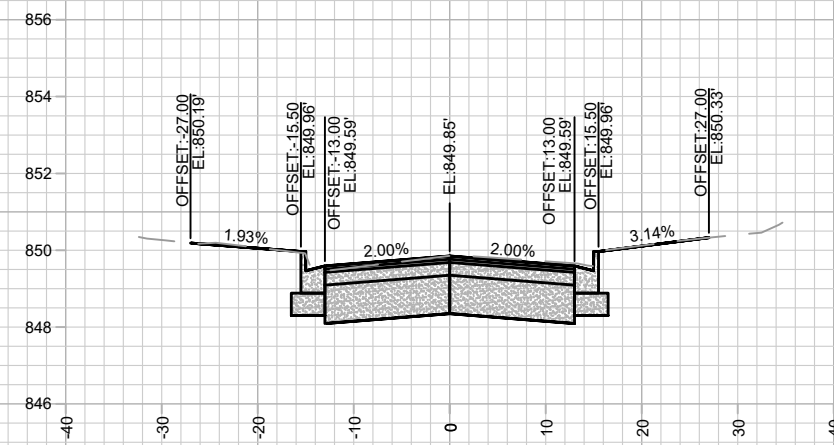
12+75.00 DWY RT



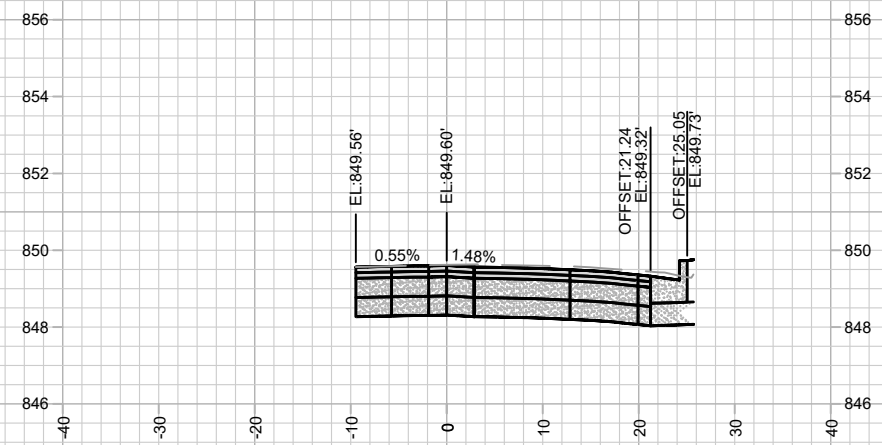
13+50.00



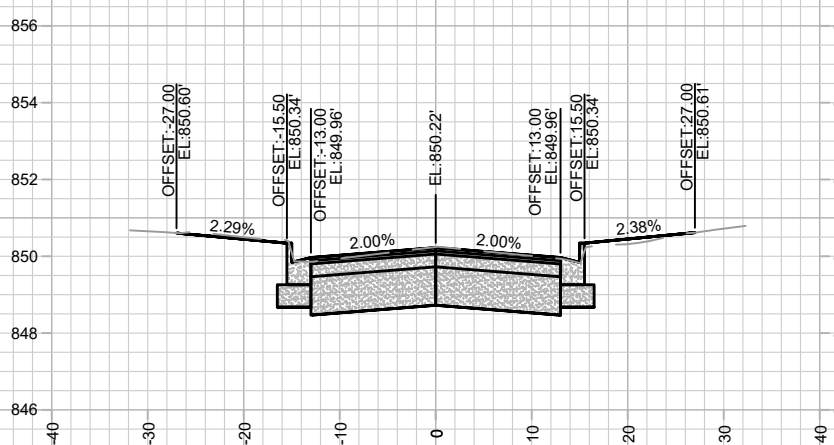
12+67.75 DWY RT



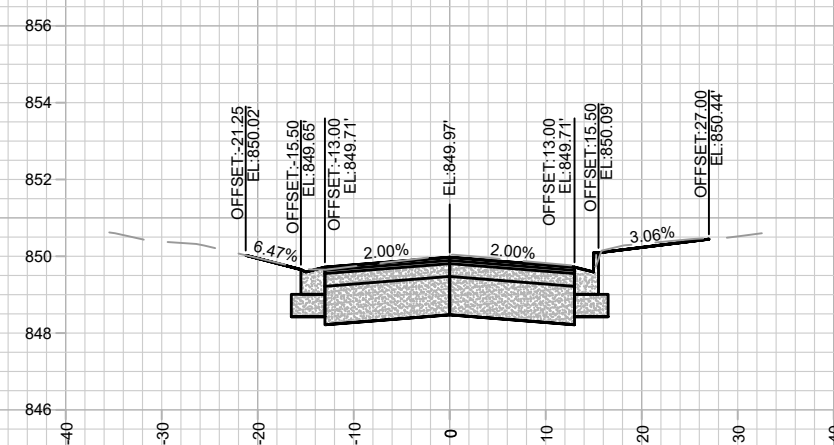
13+25.00



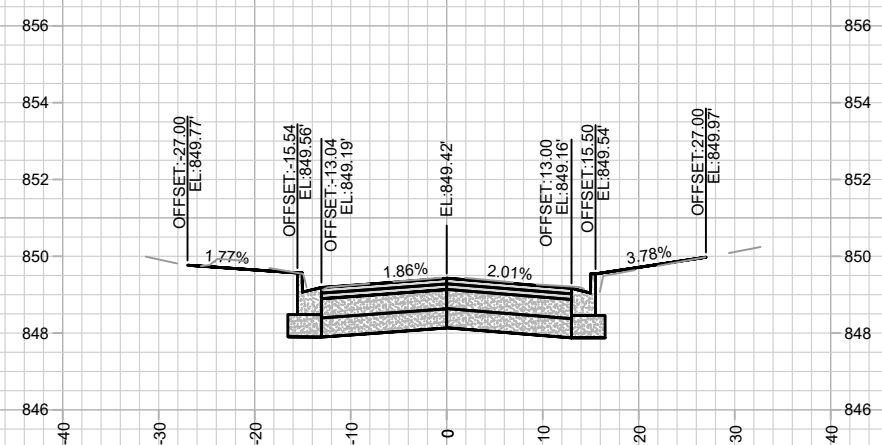
14+00.00 END PROJECT



12+50.00



13+00.00 DWY LT



13+75.00

MARK	REVISION	DATE	BY

14078
MADISON, WI
8712
CONTRACT NO:

14078
MADISON, WI
8712
CONTRACT NO:

CROSS SECTIONS - LOWELL STREET
LOWELL ST RECONSTRUCTION
M:\DESIGN\Projects\14078\CAD\Streets\14078EN-Xsections.dwg



14078
X-2